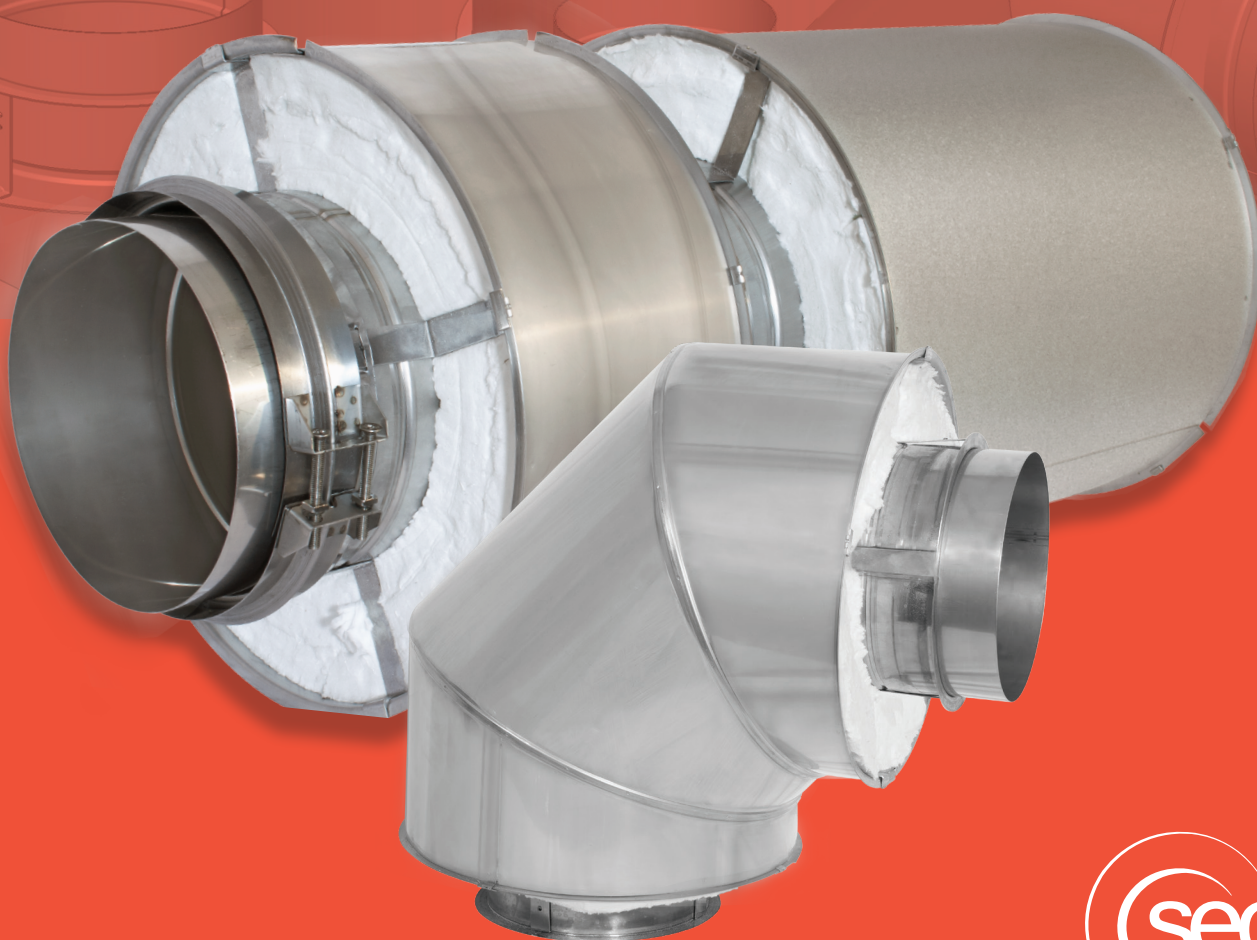


# Secure Stack<sup>®</sup> Pro

## Secure Stack<sup>®</sup> Pro

Models SCL, CAX1, CIX1, CIX2, CIX4, and CIX3Z

Positive Pressure Chimney for Boiler Breeching & Stack,  
Engine Exhaust, and Grease Duct.



# Secure Stack® Pro

Models SCL, CAX1, CIX1, CIX2, CIX4, and CIX3Z

Positive Pressure Chimney for Boiler Breeching & Stack, Engine Exhaust, and Grease Duct.

## Applications

Secure Stack Pro is available in the following configurations:

SCL: Single Wall

CAX1: 1" Air Insulated

CIX1: 1" Insulated

CIX2: 2" Insulated

CIX4: 4" Insulated

CIX3Z: 3" Insulated

Applications include: Low and High-Pressure Steam Boilers; Diesel and Turbine Exhaust; Building Heating Equipment. Industrial Furnaces; Processing Equipment; Kilns and Ovens; Grease Duct.

## Materials and Construction

### Inner Wall Material Thickness

5" - 18" .035" Laser welded, 304 or 316

20" - 36" .035" Plasma welded, 304 or 316

### Outer Wall Material Thickness

5" - 12" .024" Laser welded, 304 or 441, Galvalume

14" - 36" .024" Pittsburg Lock, 304 or 441, Galvalume

## Diameters

5"-36"

## Listings

### USA:

- UL 103 – Building Heating Appliance
- UL 103 (HT) – Standard for Factory-Built chimneys for residential type and building heating appliances
- UL 1978 – Standard for Grease Ducts
- UL 2221 – Standard for tests of fire resistive Grease Duct enclosure assemblies. CIX3Z only
- UL 2561 – Standard for 1400°F Factory-Built Chimneys. Excludes CIX3Z
- UL 1777 – Standard for Chimney Liners. SCL only.

### Canada:

- ULC/ORD C959 – Chimneys, Industrial 540°C and 760°C
- ULC S604 – Standard for Factory-Built Type A chimneys
- ULC S662 – Standard for Factory-Built Grease Duct
- ULC S635 – Standard for lining systems for existing masonry or Factory-Built chimneys and vents.

# Secure Stack®

# Pro

