



GREASE DUCT

**Zero Clearance Factory-Built Grease Duct
Single-Wall Factory-Built Grease Duct**



800-361-4909 (US) 800-667-3387 (Canada)

Zero Clearance Grease Duct

Introducing the superior factory-built grease duct design. Security's new design is sure to be the industry's choice for new restaurant construction or custom remodelling.

What Sets Us Apart

Integrated centering sleeve stabilizes and helps align the sections during installation. Sleeve also provides a stop for high temperature sealant to keep it in its intended location creating air and moisture tight joints. Extra-large spacing between outer wall sections allows more space for a quick and easy installation of the inner "V" band.

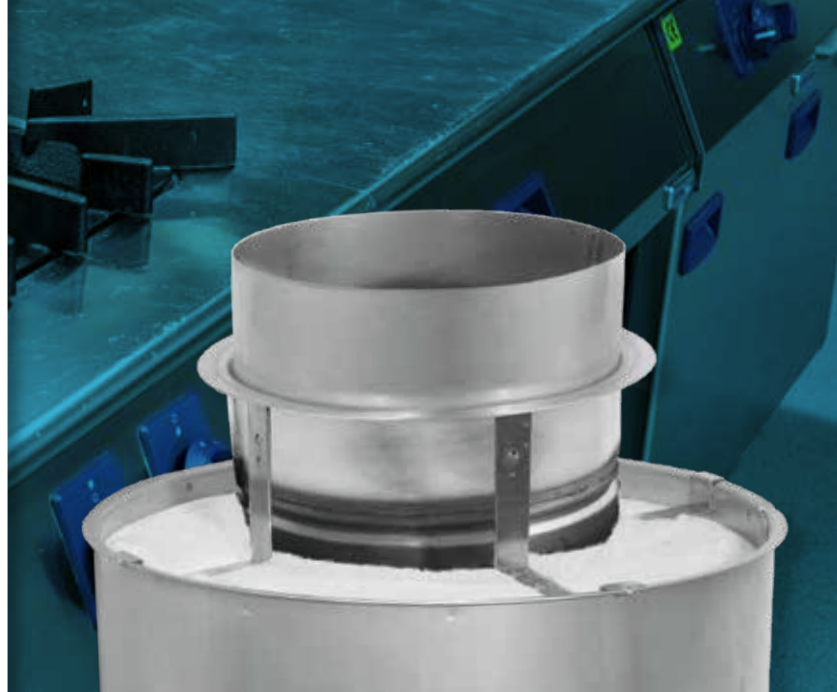
Construction

Integrated, modular grease duct with insulation and outer wall (that qualifies as 2 Hour fire resistive enclosure) eliminates need for a separate, large and expensive fire rated chase or two layers of fire rated wrap – all while occupying a smaller "footprint" in expensive commercial properties.

Available in 5" to 36" Diameters.
Single-Wall (SCL) or Double-Wall Zero Clearance (CIX3Z) with 3" fiber insulation.

Listing

Security Chimneys International, Ltd. Model grease ducts have been tested and listed by UL to UL/ULC Standards. UL 1978 (Models CIX3Z and SCL) Grease Duct and UL 2221 (Model CIX3Z only).

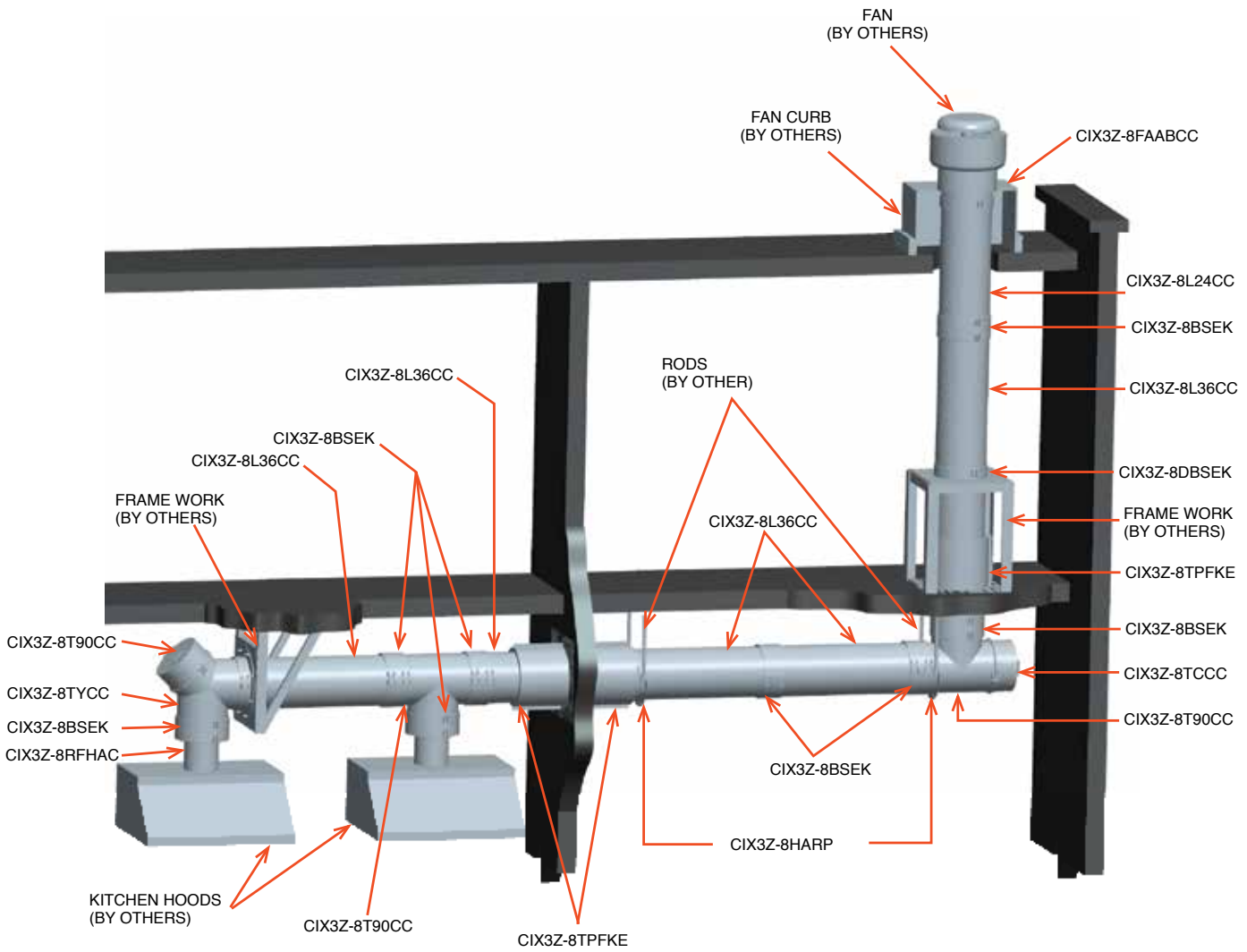


Grease Duct is subjected to rigorous and stringent requirements of the UL 1978 & UL 2221 standard, including continuous firing at 500° F (260° C), plus 30 minute firing at 2000° F (1093° C).

0" CLEARANCE GREASE DUCT NEW FACTORY-BUILT GREASE DUCT



Features	Benefits
Modular stainless steel construction	<ul style="list-style-type: none"> • Installs in sections with no field welding required. • Highly corrosion resistant. • Extremely durable.
Round tubular design	<ul style="list-style-type: none"> • Maintains structural integrity significantly longer than a rectangular welded steel product. • Superior flow achieved with round tubular design. • Easier to clean and reduces chance of fire from grease accumulation. • Eliminates corners where grease accumulation is most severe and difficult to remove.
0" clearance to combustible materials	<ul style="list-style-type: none"> • Reduces space requirements and provides ease of mind for clearances.
Two hour fire rating for the Model CIX3Z	Eliminates need for a large, expensive, separate, fire-rated enclosure or multiple, field-applied layers of fire-rated wrap materials.
Extra large spacing between outer wall sections	<ul style="list-style-type: none"> • Allows for quick and easy installation of the securing band.
SCL single-wall available (18" clearance)	<ul style="list-style-type: none"> • Possibility to switch from Zero Clearance (CIX3Z) to Single-Wall (SCL) or vice versa, within a grease duct run. • Fast and easy installation. • Less expensive. • Lighter weight.

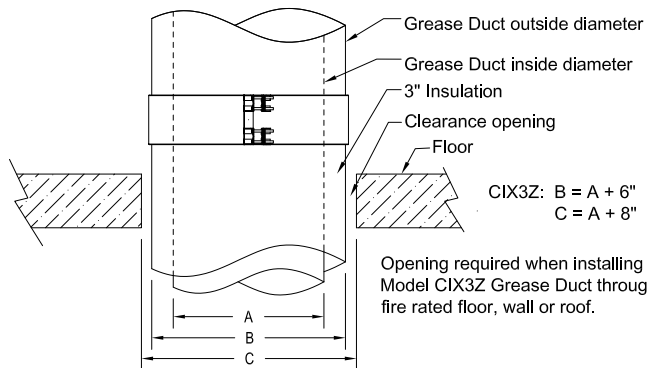


For Security factory-built grease ducts listed to UL 1978, install at a duct slope not less than 1/16 unit vertical slope in 12 units of horizontal toward the hood or toward the grease reservoir. Where Security grease ducts listed to UL 1978 exceed 75 feet in length, the slope shall not be less than 3/16 unit vertical slope in 12 units horizontal. This minimum slope is a result of tests and/or analysis performed by Underwriters Laboratories, where factory-built grease duct was compared to rectangular field-applied grease duct for performance of flow characteristics. Consult with AHJ for acceptance of this alternate method.

Openings for Model CIX3Z

Inside Diameter (A)	Roof / Floor (C)	Wall (C)
Ø5" to Ø36"	Inside Ø + 8"	Inside Ø + 8"

*Dimensions are in inches



Factory-Built Grease Duct Systems

Application		Restaurant Grease Ducts Cooking Appliances Ventilation Hoods Pizza Oven Exhaust
Maximum Operating Temperatures		500°F Continuous 2000°F Intermittent
Clearances to Combustibles	SCL (Single Wall)	Ø5" to Ø36" = 18"
	Model CIX3Z (3" insulated)	Ø5" to Ø36" = 0" 2 hr fire rated for CIX3Z per UL 2221

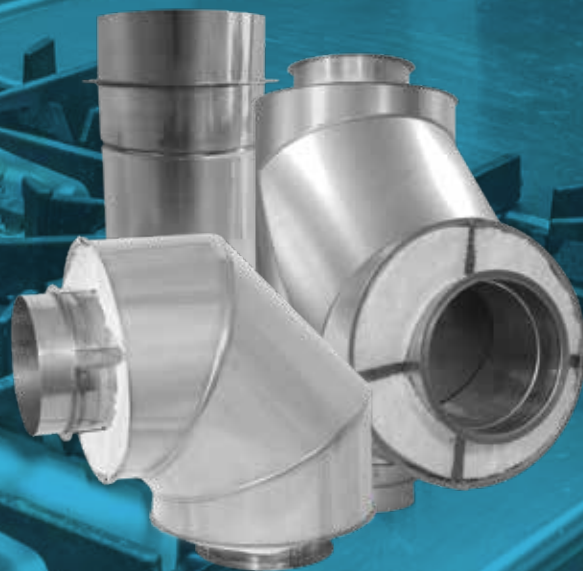


Assembly

Blanket insulation is already installed in the portion that lines up with the outside casing. We provide an insulation band to be field-installed behind the outside band.

Goes together with the inner flange and inner locking band (with centering extension) and an outer band.

Material / Thickness				
Models	Material		Thickness	
	Exterior	Interior	Exterior	Interior
CIX3Z Ø5" TO Ø36"	304 / Galvalume	304 / 316	0.025"	0.035"
SCL Ø5" TO Ø36"	--	304 / 316	--	0.035"



Grease Duct Specifications

PRE-FABRICATED, FIRE-RESISTANCE RATED GREASE DUCT FOR REMOVAL OF GREASE AND SMOKE LADEN VAPORS

PART 1- GENERAL

1.1 SUMMARY

Listed, double-wall, prefabricated, modular, fire-resistance rated grease duct for use with commercial cooking equipment for removal of grease and smoke laden vapors from kitchen hoods (as described in NFPA 96), at a maximum temperature of 500°F under continuous operation.

1.2 REFERENCE STANDARDS

- A. The latest published edition of a reference shall be applicable to this Project unless identified by a specific edition date.
- B. All materials, installation and workmanship shall comply with the applicable requirements and standards addressed within the following references.
- C. Underwriters Laboratories, Inc. (UL):
 - a. Comply with applicable UL safety standards; provide products which have been UL listed and labeled.
 - 1) UL 1978 – “Standard for Grease Ducts”
 - 2) UL 2221 – “Standard for Tests of Fire Resistive Grease Duct Enclosure Assemblies”
- D. National Fire Protection Association (NFPA):
 - a. Comply with NFPA 96 – “Standard for Ventilation Control and Fire Protection of Commercial Cooking Operations”
- E. International Code Congress (ICC)
 - a. Comply with “International Mechanical Code (IMC)” and “International Building Code (IBC)” (if applicable to the project / site)
- F. International Association of Plumbing and Mechanical Officials (IAPMO)
 - a. Comply with “Uniform Mechanical Code” (if applicable to the project / site)

1.3 QUALITY ASSURANCE

- A. Source Limitations: Obtain listed system components through one source from a single manufacturer.
- B. Must install duct in accordance with terms of NFPA 96, local code and manufacturer’s installation instructions.

1.4 WARRANTY

- A. Listed grease duct shall have a limited lifetime warranty to begin at the date of installation.

PART 2- PRODUCTS

2.1 GENERAL

- A. All materials shall meet or exceed all applicable referenced standards, federal, state and local requirements, and conform to codes and ordinances of Authorities Having Jurisdiction.

2.2 AVAILABLE MANUFACTURERS

- A. Listed and Classified (Fire Resistance Rated) Double-Wall insulated grease duct shall be model CIX3Z, as manufactured by Security Chimneys.

2.3 LISTED GREASE DUCT

- A. The grease duct shall be insulated, double-wall factory-built type for use with Type 1 kitchen hoods, as described in NFPA 96 for the transportation of air and grease-laden vapors from commercial cooking operations.
- B. Product Description:
 - a. Zero Clearance, Two (2) Hour Fire-Resistance rated model CIX3Z Grease Duct by Security Chimneys.
 - b. All section joints shall incorporate a self-centering feature to ensure proper alignment of mating flanges and proper spacing between the inner wall (flue) and the outer wall (casing).
 - c. The inner wall (flue) shall be laser or plasma welded.
 - d. System shall be rated for continuous operation at 500° F and intermittent operation at 2000° F.
 - e. All components of the grease duct system shall be provided by the manufacturer to ensure the system meets the requirements of the listing including duct supports, guides, fittings, cleanouts, and expansion joints required to install the duct.
 - f. System shall be designed to provide access for inspection and cleaning of each change of duct direction, permit drainage of grease residue through a duct section and enable the system to allow various types of fire suppression equipment to be installed into the grease ductwork.
 - g. Grease duct shall be certified to:
 - i. UL 1978 – “Grease Ducts for Restaurant Cooking Appliances”, and
 - ii. UL 2221 – “Standard for Tests of Fire Resistive Grease Duct Enclosure Assemblies”
 - h. The duct sections shall be constructed of an inner wall and an outer wall with fiber blanket insulation between the walls.
 - i. The inner wall shall be constructed of Types 304, or 316 stainless steel.
 - 1. 5 through 36 inch diameter materials: 0.035 inch thick inner wall.
 - ii. The outer wall shall be constructed of Galvalume steel, Aluminized steel or Types 430, 304, or 316 stainless steel.
 - 1. 5 thru 36 diameter inch materials: 0.025 inch thick outer wall.
 - iii. The duct shall include a minimum 3" thickness of 10 pcf density of body-soluble, high temperature capable, non-refractory fiber insulation between the inner and outer walls.

PART 3-EXECUTION

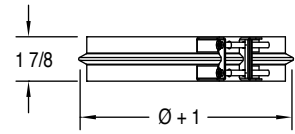
3.1 INSTALLATION OF FACTORY-BUILT GREASE DUCT

- A. Locate to comply with minimum clearances from combustibles and minimum termination heights according to product listing or NFPA 96, whichever is most stringent.
- B. The installation shall be in accordance with the manufacturer’s installation instructions and shall conform to all applicable state and local codes.
- C. Inner pipe joints shall be held together by means of formed ‘V’ bands and sealed with S650 Sealant.
- D. Connection to the hood shall be made with a round hood collar or a square-to-round transition.
- E. Curb mounted fans shall incorporate a fan adaptor plate.
- F. All construction and supporting of the kitchen ventilation system will be in accordance with Security Chimneys installation instructions.
- G. Store grease duct sections inside or covered adequately to protect from weather or accidental damage.
- H. The entire grease duct system from the appliance to the termination, including all accessories, except as noted, shall be from one manufacturer.

Joint Assembly

Locking Inner "V" Band

Use to clamp and seal parts together. To be sealed with joint sealant (not included). Included with components that require the locking V-band. Included with CIX3Z and SCL: Two half bands and hardware.

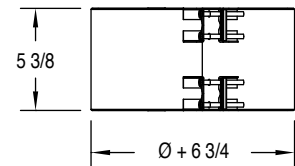


Ø	HEIGHT	ZERO CLEARANCE 3" INSULATED	SINGLE-WALL
5" to 36"	1 7/8"	CIX3Z-ØBSI	SCLØBSI

Materials available: 441.

Locking Outer Band

Use to seal outer casing at each joint. Included with components that require it. Included with CIX3Z: Two half bands (small diameter) or one band (for large diameter), One 5 3/4" wide insulation strip and hardware.

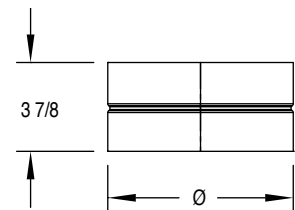


Ø	Ø OF BAND	HEIGHT	ZERO CLEARANCE 3" INSULATED	SINGLE-WALL
5" to 36"	11 3/4" to 42 3/4"	5 3/8"	CIX3Z-ØBSE	---

Materials available: 441.

Centering Flue Extension

Use for centering parts together while assembling. Included with components that require it. Included: One (1) Sleeve.

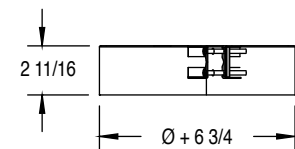


Ø	Ø OF BAND	HEIGHT	ZERO CLEARANCE 3" INSULATED	SINGLE-WALL
5" to 36"	4 7/8" to 35 7/8"	3 7/8"	PR-C0794-Ø	

Materials available: 441.

Half Outer Band

Use to seal outer casing when using Anchor Plate (AP) or an Heavy Duty Wall Support (WSHD). Need one band on each side of the support. Included with CIX3Z: Two half bands (small diameter) or one band (for large diameter), One 3" wide insulation strip and hardware.

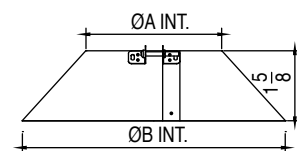


Ø	Ø OF BAND	HEIGHT	ZERO CLEARANCE 3" INSULATED	SINGLE-WALL
5" to 36"	11 3/4" to 42 3/4"	2 11/16"	CIX3Z-ØDBSE	---

Materials available: 441.

Duct Closure Band

Use to shield insulation from weather when open duct or when there is a transition from CIX3Z to SCL model on vertical run. May require a drain at the base of duct. Hardware provided. Included with CIX3Z and SCL: One (1) half band and hardware.



ØA	ØB	HEIGHT	ZERO CLEARANCE 3" INSULATED	SINGLE-WALL
5" to 36"	13" to 44"	1 5/8"	CIX3Z-ØCR	--

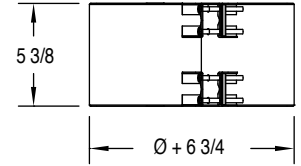
Materials available: 304, Galvalume.

Transition Outer Band

Used to shield insulation on vertical or horizontal run when there is a transition from SCL to CIX3Z or from CIX3Z to SCL. Included: Two half bands and hardware.

ØA	HEIGHT	ZERO CLEARANCE 3" INSULATED	SINGLE-WALL
5" to 36"	5 3/8"	--	SCLØCIX3Z

Materials available: 441.



Sealant

S-375 sealant is used if the outer band is exposed to weather.

S-650 sealant is used for Flange to Flange Joint Assembly.

S-TPFS is used with the Through Penetration Firestop Kit (TPFK) when the duct is penetrating a 2-hour fire rated Wall or Floor with CIX3Z.



EXPECTED NUMBER OF TUBES PER JOINT/HOLE FOR EACH SEALANT

INNER DUCT DIAMETER	S-375 (TUBE PER OUTER JOINT FOR EXTERIOR WEATHERING)	S-650 (TUBE PER JOINT ASSEMBLY)	S-TPFS (TUBE PER HOLE THROUGH ONE 2HR FIRE RATED WALL OR FLOOR)
5"	1/5	1/5	2 1/4
6"	1/5	1/5	2 1/2
7"	1/5	1/5	2 3/4
8"	1/5	1/5	2 3/4
9"	1/5	1/5	3
10"	1/5	1/5	3 1/4
11"	1/4	1/4	3 1/4
12"	1/4	1/4	3 1/2
13"	1/4	1/4	3 3/4
14"	1/4	1/4	3 3/4
16"	1/4	1/4	4 1/4
18"	1/3	1/3	4 1/2
20"	1/3	1/3	5
22"	1/3	1/3	5 1/4
24"	1/2	1/2	5 1/2
26"	1/2	1/2	6
28"	1/2	1/2	6 1/4
30"	2/3	2/3	6 3/4
32"	2/3	2/3	7
34"	2/3	2/3	7 1/4
36"	2/3	2/3	7 3/4

Lengths

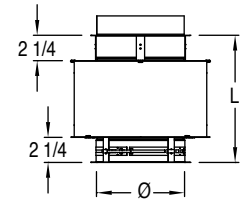
Lengths

Used as standard duct lengths. Available in sizes from 5- to 36-inch. Included with CIX3Z: One (1) Locking Inner "V" Band (BSI), one (1) Centering Flue Extension (PR-C0794) and one (1) Locking Outer Band (BSE). Included with SCL: One Locking Inner "V" Band (BSI) and one Centering Flue Extension (PR-C0794)

Ø	LENGTH	HEIGHT	ZERO CLEARANCE 3" INSULATED	SINGLE-WALL
5" to 36"	12"	11 9/16"	CIX3Z-ØL12	SCLØL12
5" to 36"	18"	17 9/16"	CIX3Z-ØL18	SCLØL18
5" to 36"	24"	24 1/16"	CIX3Z-ØL24	SCLØL24
5" to 36"	36"	36 1/16"	CIX3Z-ØL36	SCLØL36

Materials available: 304, 316.

Flow resistance: $K = 0.30$ (eff. length [ft] / Ø [in]).



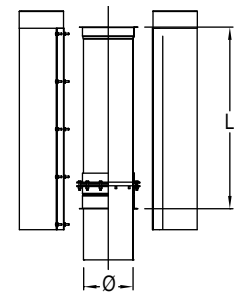
Adjustable Lengths

Used to add length. Adjust to fit odd dimensions and compensate for thermal expansion. Not suitable for positive pressure applications. Included with CIX3Z: One (1) Locking Inner "V" Band (BSI), one (1) Graphite packing kit on a inner liner, a special tool for proper installation of Graphite packing, two half casing, insulation pad and hardware. Included with SCL: One (1) Locking Inner "V" Band (BSI), one (1) Graphite packing kit on a inner liner, a special tool for proper installation of Graphite packing and hardware.

Ø	EFFECTIVE LENGTH	ZERO CLEARANCE 3" INSULATED	SINGLE-WALL
5" to 36"	7 1/4" to 28 3/8"	CIX3Z-ØLA	SCLØLA

Materials available: 304, 316.

Flow resistance: $K = 0.30$ (eff. length [ft] / Ø [in]).



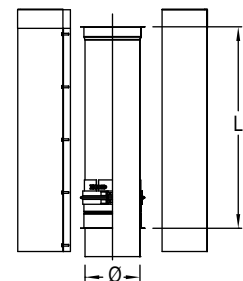
Variable Lengths

Used to adjust to fit odd dimensions. Not used for thermal expansion. Can be used in positive pressure applications. Included with CIX3Z: One (1) Locking Inner "V" Band (BSI), one (1) collar kit on the inner liner, two half casing, insulation pad and hardware. Included with SCL: Two (2) Locking Inner "V" Band (BSI), one (1) collar kit on the inner liner and hardware.

Ø	EFFECTIVE LENGTH	ZERO CLEARANCE 3" INSULATED	SINGLE-WALL
5" to 36"	7" to 28 1/2"	CIX3Z-ØLV	SCLØLV

Materials available: 304, 316.

Flow resistance: $K = 0.30$ (eff. length [ft] / Ø [in]).



Lengths

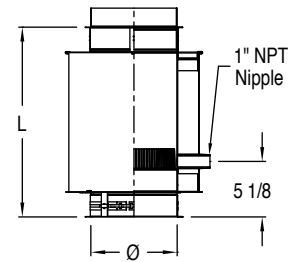
Drain Lengths

Used to drain grease or condensation from inner wall on vertical runs. 1" NPT nipple. Included with CIX3Z: One (1) Locking Inner "V" Band (BSI), one (1) Centering Flue Extension (PR-C0794) and one (1) Locking Outer Band (BSE). Included with SCL: One Locking Inner "V" Band (BSI) and one Centering Flue Extension (PR-C0794).

Ø	EFFECTIVE LENGTH	ZERO CLEARANCE 3" INSULATED	SINGLE-WALL
5" to 36"	17 9/16"	CIX3Z-ØDL	SCLØDL

Materials available: 304, 316.

Flow resistance: $K = 0.30$ (eff. length [ft] / Ø [in]).



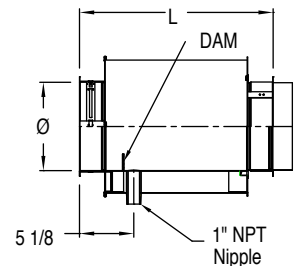
Horizontal Drain Lengths

Used as a horizontal drain in grease duct applications. There is a DAM inside the inner wall for directing the grease in the drain. 1" NPT nipple. Included with CIX3Z: One (1) Locking Inner "V" Band (BSI), one (1) Centering Flue Extension (PR-C0794) and one (1) Locking Outer Band (BSE). Included with SCL: One Locking Inner "V" Band (BSI) and one Centering Flue Extension (PR-C0794).

Ø	EFFECTIVE LENGTH	ZERO CLEARANCE 3" INSULATED	SINGLE-WALL
5" to 36"	17 9/16"	CIX3Z-ØHDL	SCLØHDL

Materials available: 304, 316.

Flow resistance: $K = 0.40$ (eff. length [ft] / Ø [in]).



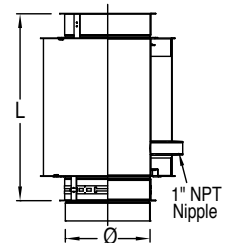
Nozzle Lengths

Used to insert a fire-suppression or wash-down nozzle. 1" NPT nipple. Included with CIX3Z: One (1) Locking Inner "V" Band (BSI), one (1) Centering Flue Extension (PR-C0794) and one (1) Locking Outer Band (BSE). Included with SCL: One Locking Inner "V" Band (BSI) and one Centering Flue Extension (PR-C0794).

Ø	EFFECTIVE LENGTH	ZERO CLEARANCE 3" INSULATED	SINGLE-WALL
5" to 36"	17 9/16"	CIX3Z-ØNL	SCLØNL

Materials available: 304, 316.

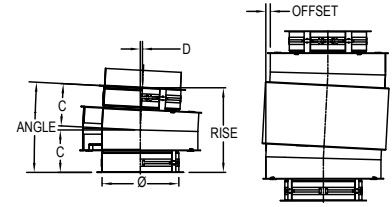
Flow resistance: $K = 0.30$ (eff. length [ft] / Ø [in]).



Elbows

3° Elbow & Elbow Kits

Used to change direction of the duct or to provide offset. 3° elbows provide also a slope for horizontal run. Comes alone (CIX3Z-ØE3) or in pairs as a kit (CIX3Z-ØEK3). The Elbow Kit (two elbows) can establish many different offset angles when combined with other elbows. One Locking V-Band (BSI), one Centering Flue Extension (PR-C0794) and one Locking Outer Band (BSE) included.



ZERO CLEARANCE 3" INSULATED

Ø	C	D	HEIGHT	OFFSET	ELBOW	ELBOW KIT
5"	4 13/32"	7/32"	8 13/16"	7/16"	CIX3Z-5E3	CIX3Z-5EK3
6"	4 7/16"	7/32"	8 7/8"	7/16"	CIX3Z-6E3	CIX3Z-6EK3
7"	4 7/16"	7/32"	8 7/8"	7/16"	CIX3Z-7E3	CIX3Z-7EK3
8"	4 15/32"	7/32"	8 15/16"	7/16"	CIX3Z-8E3	CIX3Z-8EK3
9"	4 1/2"	7/32"	8 31/32"	7/16"	CIX3Z-9E3	CIX3Z-9EK3
10"	4 1/2"	7/32"	8 31/32"	1/2"	CIX3Z-10E3	CIX3Z-10EK3
11"	4 1/2"	1/4"	9"	1/2"	CIX3Z-11E3	CIX3Z-11EK3
12"	4 1/2"	1/4"	9"	1/2"	CIX3Z-12E3	CIX3Z-12EK3
13"	4 17/32"	1/4"	9 1/16"	1/2"	CIX3Z-13E3	CIX3Z-13EK3
14"	4 17/32"	1/4"	9 1/16"	1/2"	CIX3Z-14E3	CIX3Z-14EK3
16"	4 9/16"	1/4"	9 1/8"	1/2"	CIX3Z-16E3	CIX3Z-16EK3
18"	4 19/32"	1/4"	9 3/16"	1/2"	CIX3Z-18E3	CIX3Z-18EK3
20"	4 5/8"	1/4"	9 7/32"	1/2"	CIX3Z-20E3	CIX3Z-20EK3
22"	4 21/32"	1/4"	9 9/32"	1/2"	CIX3Z-22E3	CIX3Z-22EK3
24"	4 21/32"	1/4"	9 11/32"	1/2"	CIX3Z-24E3	CIX3Z-24EK3
26"	4 11/16"	1/4"	9 3/8"	1/2"	CIX3Z-26E3	CIX3Z-26EK3
28"	4 23/32"	1/4"	9 15/32"	1/2"	CIX3Z-28E3	CIX3Z-28EK3
30"	4 3/4"	1/4"	9 1/2"	1/2"	CIX3Z-30E3	CIX3Z-30EK3
32"	4 25/32"	1/4"	9 17/32"	1/2"	CIX3Z-32E3	CIX3Z-32EK3
34"	4 13/16"	1/4"	9 19/32"	1/2"	CIX3Z-34E3	CIX3Z-34EK3
36"	4 27/32"	1/4"	9 21/32"	1/2"	CIX3Z-36E3	CIX3Z-36EK3

SINGLE-WALL

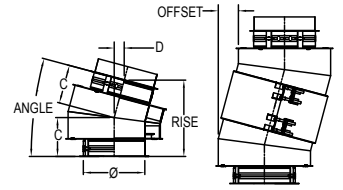
Ø	C	D	HEIGHT	OFFSET	ELBOW	ELBOW KIT
5"	3 7/16	3/16"	6 7/8	3/8"	SCL5E3	SCL5EK3
6"	3 15/32	3/16"	6 15/16	3/8"	SCL6E3	SCL6EK3
7"	3 15/32	3/16"	6 15/16	3/8"	SCL7E3	SCL7EK3
8"	3 15/32	3/16"	6 15/16	3/8"	SCL8E3	SCL8EK3
9"	3 1/2	3/16"	7	3/8"	SCL9E3	SCL9EK3
10"	3 1/2	3/16"	7	3/8"	SCL10E3	SCL10EK3
11"	3 17/32	3/16"	7 1/16	3/8"	SCL11E3	SCL11EK3
12"	3 17/32	3/16"	7 1/16	3/8"	SCL12E3	SCL12EK3
13"	3 17/32	3/16"	7 1/16	3/8"	SCL13E3	SCL13EK3
14"	3 9/16	3/16"	7 1/8	3/8"	SCL14E3	SCL14EK3
16"	3 19/32	3/16"	7 3/16	3/8"	SCL16E3	SCL16EK3
18"	3 5/8	3/16"	7 1/4	3/8"	SCL18E3	SCL18EK3
20"	3 5/8	3/16"	7 1/4	3/8"	SCL20E3	SCL20EK3
22"	3 21/32	3/16"	7 5/16	3/8"	SCL22E3	SCL22EK3
24"	3 11/16	3/16"	7 3/8	3/8"	SCL24E3	SCL24EK3
26"	3 23/32	3/16"	7 7/16	3/8"	SCL26E3	SCL26EK3
28"	3 3/4	3/16"	7 1/2	3/8"	SCL28E3	SCL28EK3
30"	3 25/32	3/16"	7 9/16	3/8"	SCL30E3	SCL30EK3
32"	3 25/32	3/16"	7 9/16	3/8"	SCL32E3	SCL32EK3
34"	3 13/16	3/16"	7 5/8	3/8"	SCL34E3	SCL34EK3
36"	3 27/32	3/16"	7 11/16	3/8"	SCL36E3	SCL36EK3

Materials available: 304, 316.
Flow resistance: K = 0.03

Elbows

15° Elbows

Used to change direction of the duct or to provide offset.
 Included with CIX3Z: One (1) Locking Inner "V" Band (BSI), one (1) Centering Flue Extension (PR-C0794) and one (1) Locking Outer Band (BSE). Included with SCL: One (1) Locking Inner "V" Band (BSI) and one (1) Centering Flue Extension (PR-C0794).



ZERO CLEARANCE 3" INSULATED

SINGLE-WALL

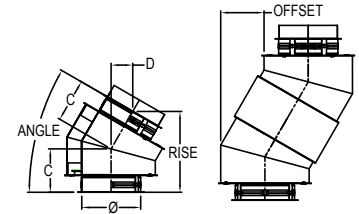
Ø	C	D	HEIGHT	OFFSET	PRODUCT CODE	Ø	C	D	HEIGHT	OFFSET	PRODUCT CODE
5"	5"	1 9/32"	9 13/16"	2 9/16"	CIX3Z-5E15	5"	5"	31/32"	7 5/16"	1 15/16"	SCL5E15
6"	5 3/32"	1 5/16"	9 31/32"	2 5/8"	CIX3Z-6E15	6"	5 3/32"	31/32"	7 7/16"	1 15/16"	SCL6E15
7"	5 1/8"	1 11/32"	10 3/32"	2 11/16"	CIX3Z-7E15	7"	5 1/8"	1"	7 9/16"	2"	SCL7E15
8"	5 3/16"	1 11/32"	10 7/32"	2 11/16"	CIX3Z-8E15	8"	5 3/16"	1"	7 11/16"	2"	SCL8E15
9"	5 9/32"	1 3/8"	10 11/32"	2 3/4"	CIX3Z-9E15	9"	5 9/32"	1 1/32"	7 13/16"	2 1/16"	SCL9E15
10"	5 11/32"	1 3/8"	10 1/2"	2 3/4"	CIX3Z-10E15	10"	5 11/32"	1 1/32"	7 15/16"	2 1/16"	SCL10E15
11"	5 13/32"	1 13/32"	10 5/8"	2 13/16"	CIX3Z-11E15	11"	5 13/32"	1 1/16"	8 1/16"	2 1/8"	SCL11E15
12"	5 15/32"	1 13/32"	10 3/4"	2 13/16"	CIX3Z-12E15	12"	5 15/32"	1 1/16"	8 5/32"	2 1/8"	SCL12E15
13"	5 17/32"	1 7/16"	10 7/8"	2 7/8"	CIX3Z-13E15	13"	5 17/32"	1 3/32"	8 11/32"	2 3/16"	SCL13E15
14"	5 19/32"	1 7/16"	11"	2 7/8"	CIX3Z-14E15	14"	5 19/32"	1 1/8"	8 15/32"	2 1/4"	SCL14E15
16"	5 23/32"	1 1/4"	11 1/4"	2 1/2"	CIX3Z-16E15	16"	5 23/32"	1 5/32"	8 23/32"	2 5/16"	SCL16E15
18"	5 7/8"	1 17/32"	11 17/32"	3 1/16"	CIX3Z-18E15	18"	5 7/8"	1 3/16"	8 31/32"	2 3/8"	SCL18E15
20"	6"	1 9/16"	11 25/32"	3 1/8"	CIX3Z-20E15	20"	6"	1 7/32"	9 7/32"	2 7/16"	SCL20E15
22"	6 1/8"	1 19/32"	12 1/32"	3 3/16"	CIX3Z-22E15	22"	6 1/8"	1 1/4"	9 15/32"	2 1/2"	SCL22E15
24"	6 1/4"	1 5/8"	12 5/16"	3 1/4"	CIX3Z-24E15	24"	6 1/4"	1 9/32"	9 25/32"	2 9/16"	SCL24E15
26"	6 3/8"	1 21/32"	12 9/16"	3 5/16"	CIX3Z-26E15	26"	6 3/8"	1 5/16"	10"	2 5/8"	SCL26E15
28"	6 1/2"	1 11/16"	12 13/16"	3 3/8"	CIX3Z-28E15	28"	6 1/2"	1 11/32"	10 1/4"	2 11/16"	SCL28E15
30"	6 21/32"	1 23/32"	13 3/32"	3 7/16"	CIX3Z-30E15	30"	6 21/32"	1 3/8"	10 1/2"	2 3/4"	SCL30E15
32"	6 25/32"	1 3/4"	13 11/32"	3 1/2"	CIX3Z-32E15	32"	6 25/32"	1 7/16"	10 13/16"	2 7/8"	SCL32E15
34"	6 29/32"	1 25/32"	13 19/32"	3 9/16"	CIX3Z-34E15	34"	6 29/32"	1 15/32"	11 1/16"	2 15/16"	SCL34E15
36"	7 1/16"	1 27/32"	13 27/32"	3 11/16"	CIX3Z-36E15	36"	7 1/16"	1 1/2"	11 5/16"	3"	SCL36E15

Materials available: 304, 316.
 Flow resistance: K = 0.06

Elbows

30° Elbows

Used to change direction of the duct or to provide offset.
 Included with CIX3Z: One (1) Locking Inner "V" Band (BSI), one (1) Centering Flue Extension (PR-C0794) and one (1) Locking Outer Band (BSE). Included with SCL: One (1) Locking Inner "V" Band (BSI) and one (1) Centering Flue Extension (PR-C0794).



ZERO CLEARANCE 3" INSULATED

SINGLE-WALL

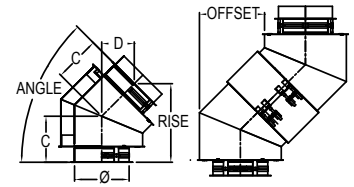
Ø	C	D	HEIGHT	OFFSET	PRODUCT CODE	Ø	C	D	HEIGHT	OFFSET	PRODUCT CODE
5"	5 3/4"	2 7/8"	10 3/4"	5 3/4"	CIX3Z-5E30	5"	4 1/16"	2 1/32"	7 19/32"	4 1/16"	SCL5E30
6"	5 29/32"	2 15/16"	11"	5 7/8"	CIX3Z-6E30	6"	4 3/16"	2 3/32"	7 13/16"	4 3/16"	SCL6E30
7"	6 1/32"	3"	11 1/4"	6"	CIX3Z-7E30	7"	4 5/16"	2 5/32"	8 1/16"	4 5/16"	SCL7E30
8"	6 3/32"	3 1/32"	11 3/8"	6 1/16"	CIX3Z-8E30	8"	4 15/32"	2 7/32"	8 11/32"	4 7/16"	SCL8E30
9"	6 9/32"	3 5/32"	11 3/8"	6 5/16"	CIX3Z-9E30	9"	4 19/32"	2 9/32"	8 9/16"	4 9/16"	SCL9E30
10"	6 7/16"	3 7/32"	12 1/32"	6 7/16"	CIX3Z-10E30	10"	4 23/32"	2 11/32"	8 13/16"	4 11/16"	SCL10E30
11"	6 9/16"	3 9/32"	12 7/32"	6 9/16"	CIX3Z-11E30	11"	4 27/32"	2 13/32"	9 1/32"	4 13/16"	SCL11E30
12"	6 11/16"	3 11/32"	12 1/2"	6 11/16"	CIX3Z-12E30	12"	5"	2 1/2"	9 11/32"	5"	SCL12E30
13"	6 13/16"	3 7/16"	12 23/32"	6 7/8"	CIX3Z-13E30	13"	5 1/8"	2 9/16"	9 9/16"	5 1/8"	SCL13E30
14"	6 31/32"	3 15/32"	13"	6 15/16"	CIX3Z-14E30	14"	5 1/4"	2 5/8"	9 25/32"	5 1/4"	SCL14E30
16"	7 7/32"	3 5/8"	13 1/2"	7 1/4"	CIX3Z-16E30	16"	5 17/32"	2 3/4"	10 5/16"	5 1/2"	SCL16E30
18"	7 1/2"	3 3/4"	14"	7 1/2"	CIX3Z-18E30	18"	5 25/32"	2 7/8"	10 25/32"	5 3/4"	SCL18E30
20"	7 3/4"	3 7/8"	14 1/2"	7 3/4"	CIX3Z-20E30	20"	6 1/16"	3 1/32"	11 5/16"	6 1/16"	SCL20E30
22"	8 1/32"	4 1/32"	15"	8 1/16"	CIX3Z-22E30	22"	6 11/32"	3 5/32"	11 27/32"	6 5/16"	SCL22E30
24"	8 5/16"	4 5/32"	15 1/2"	8 5/16"	CIX3Z-24E30	24"	6 19/32"	3 9/32"	12 5/16"	6 9/16"	SCL24E30
26"	8 9/16"	4 9/32"	16"	8 9/16"	CIX3Z-26E30	26"	6 7/8"	3 7/16"	12 27/32"	6 7/8"	SCL26E30
28"	8 27/32"	4 13/32"	16 1/2"	8 13/16"	CIX3Z-28E30	28"	7 1/8"	3 9/16"	13 9/32"	7 1/8"	SCL28E30
30"	9 3/32"	4 9/16"	17"	9 1/8"	CIX3Z-30E30	30"	7 13/32"	3 11/16"	13 13/16"	7 3/8"	SCL30E30
32"	9 3/8"	4 11/16"	17 1/2"	9 3/8"	CIX3Z-32E30	32"	7 21/32"	3 13/16"	14 9/32"	7 5/8"	SCL32E30
34"	9 5/8"	4 13/16"	18"	9 5/8"	CIX3Z-34E30	34"	7 15/16"	3 31/32"	14 13/16"	7 15/16"	SCL34E30
36"	9 29/32"	4 15/16"	18 15/32"	9 7/8"	CIX3Z-36E30	36"	8 7/32"	4 3/32"	15 11/32"	8 3/16"	SCL36E30

Materials available: 304, 316.
 Flow resistance: K = 0.12

Elbows

45° Elbows

Used to change direction of the duct or to provide offset.
 Included with CIX3Z: One (1) Locking Inner "V" Band (BSI), one (1) Centering Flue Extension (PR-C0794) and one (1) Locking Outer Band (BSE). Included with SCL: One (1) Locking Inner "V" Band (BSI) and one (1) Centering Flue Extension (PR-C0794)



ZERO CLEARANCE 3" INSULATED

Ø	C	D	HEIGHT	OFFSET	PRODUCT CODE
5"	6 9/16"	4 21/32"	11 7/32"	9 5/16"	CIX3Z-5E45
6"	6 25/32"	4 25/32"	11 9/16"	9 9/16"	CIX3Z-6E45
7"	6 31/32"	4 15/16"	11 29/32"	9 7/8"	CIX3Z-7E45
8"	7 3/16"	5 3/32"	12 9/32"	10 3/16"	CIX3Z-8E45
9"	7 13/32"	5 7/32"	12 5/8"	10 7/16"	CIX3Z-9E45
10"	7 19/32"	5 3/8"	12 31/32"	10 3/4"	CIX3Z-10E45
11"	7 13/16"	5 17/32"	13 11/32"	11 1/16"	CIX3Z-11E45
12"	8 1/32"	5 21/32"	13 11/16"	11 5/16"	CIX3Z-12E45
13"	8 7/32"	5 13/16"	14 1/32"	11 5/8"	CIX3Z-13E45
14"	8 7/16"	5 31/32"	14 13/32"	11 15/16"	CIX3Z-14E45
16"	8 27/32"	6 1/4"	15 3/32"	12 1/2"	CIX3Z-16E45
18"	9 1/4"	6 9/16"	15 13/16"	13 1/8"	CIX3Z-18E45
20"	9 11/16"	6 27/32"	16 1/2"	13 11/16"	CIX3Z-20E45
22"	10 3/32"	7 1/8"	17 7/32"	14 1/4"	CIX3Z-22E45
24"	10 1/2"	7 7/16"	17 15/16"	14 7/8"	CIX3Z-24E45
26"	10 29/32"	7 23/32"	18 21/32"	15 7/16"	CIX3Z-26E45
28"	11 11/32"	8"	19 11/32"	16"	CIX3Z-28E45
30"	11 3/4"	8 5/16"	20 1/16"	16 5/8"	CIX3Z-30E45
32"	12 5/32"	8 19/32"	20 3/4"	17 3/16"	CIX3Z-32E45
34"	12 9/16"	8 7/8"	21 15/32"	17 3/4"	CIX3Z-34E45
36"	13"	9 3/16"	22 5/32"	18 3/8"	CIX3Z-36E45

SINGLE-WALL

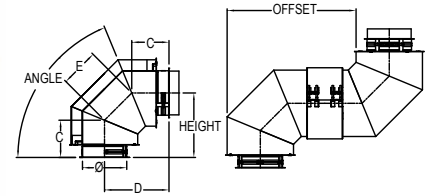
Ø	C	D	HEIGHT	OFFSET	PRODUCT CODE
5"	4 7/16"	3 1/8"	7 9/16"	6 1/4"	SCL5E45
6"	4 5/8"	3 9/32"	7 29/32"	6 9/16"	SCL6E45
7"	4 27/32"	3 7/16"	8 9/32"	6 7/8"	SCL7E45
8"	5 1/32"	3 9/16"	8 19/32"	7 1/8"	SCL8E45
9"	5 1/4"	3 23/32"	8 31/32"	7 7/16"	SCL9E45
10"	5 15/32"	3 7/8"	9 11/32"	7 3/4"	SCL10E45
11"	5 21/32"	4"	9 21/32"	8"	SCL11E45
12"	5 7/8"	4 5/32"	10 1/32"	8 5/16"	SCL12E45
13"	6 3/32"	4 5/16"	10 13/32"	8 5/8"	SCL13E45
14"	6 9/32"	4 7/16"	10 23/32"	8 7/8"	SCL14E45
16"	6 11/16"	4 23/32"	11 13/32"	9 7/16"	SCL16E45
18"	7 1/8"	5 1/32"	12 5/32"	10 1/16"	SCL18E45
20"	7 17/32"	5 5/16"	12 27/32"	10 5/8"	SCL20E45
22"	7 15/16"	5 5/8"	13 9/16"	11 1/4"	SCL22E45
24"	8 11/32"	5 29/32"	14 1/4"	11 13/16"	SCL24E45
26"	8 25/32"	6 7/32"	15"	12 7/16"	SCL26E45
28"	9 3/16"	6 1/2"	15 11/16"	13"	SCL28E45
30"	9 19/32"	6 25/32"	16 3/8"	13 9/16"	SCL30E45
32"	10"	7 1/16"	17 1/16"	14 1/8"	SCL32E45
34"	10 7/16"	7 3/8"	17 13/16"	14 3/4"	SCL34E45
36"	10 27/32"	7 21/32"	18 1/2"	15 5/16"	SCL36E45

Materials available: 304, 316.
 Flow resistance: K = 0.15

Elbows

90° Elbow

Use to change direction of the duct or to provide offset. Included with CIX3Z: One (1) Locking Inner "V" Band (BSI), one (1) Centering Flue Extension (PR-C0794) and one (1) Locking Outer Band (BSE). Included with SCL: One (1) Locking Inner "V" Band (BSI) and one (1) Centering Flue Extension (PR-C0794).



ZERO CLEARANCE 3" INSULATED

Ø	C	D	E	HEIGHT	OFFSET	PRODUCT CODE
5"	6 9/16"	11 7/32"	6 9/16"	11 7/32"	22 7/16"	CIX3Z-5E90
6"	6 25/32"	11 23/32"	7"	11 23/32"	23 7/16"	CIX3Z-6E90
7"	6 31/32"	12 7/32"	7 13/32"	12 7/32"	24 7/16"	CIX3Z-7E90
8"	7 3/16"	12 23/32"	7 13/16"	12 23/32"	25 7/16"	CIX3Z-8E90
9"	7 13/32"	13 7/32"	8 7/32"	13 7/32"	26 7/16"	CIX3Z-9E90
10"	7 19/32"	13 23/32"	8 21/32"	13 23/32"	27 7/16"	CIX3Z-10E90
11"	7 13/16"	14 7/32"	9 1/16"	14 7/32"	28 7/16"	CIX3Z-11E90
12"	8 1/32"	14 23/32"	9 15/32"	14 23/32"	29 7/16"	CIX3Z-12E90
13"	8 7/32"	15 7/32"	9 7/8"	15 7/32"	30 7/16"	CIX3Z-13E90
14"	8 7/16"	15 23/32"	10 5/16"	15 23/32"	31 7/16"	CIX3Z-14E90
16"	8 27/32"	16 23/32"	11 1/8"	16 23/32"	33 7/16"	CIX3Z-16E90
18"	9 1/4"	17 23/32"	11 31/32"	17 23/32"	35 7/16"	CIX3Z-18E90
20"	9 11/16"	18 23/32"	12 25/32"	18 23/32"	37 7/16"	CIX3Z-20E90
22"	10 3/32"	19 23/32"	13 5/8"	19 23/32"	39 7/16"	CIX3Z-22E90
24"	10 1/2"	20 23/32"	14 7/16"	20 23/32"	41 7/16"	CIX3Z-24E90
26"	10 29/32"	21 23/32"	15 9/32"	21 23/32"	43 7/16"	CIX3Z-26E90
28"	11 11/32"	22 23/32"	16 3/32"	22 23/32"	45 7/16"	CIX3Z-28E90
30"	11 3/4"	23 23/32"	16 15/16"	23 23/32"	47 7/16"	CIX3Z-30E90
32"	12 5/32"	24 23/32"	17 3/4"	24 23/32"	49 7/16"	CIX3Z-32E90
34"	12 9/16"	25 23/32"	18 19/32"	25 23/32"	51 7/16"	CIX3Z-34E90
36"	13"	26 23/32"	19 13/32"	26 23/32"	53 7/16"	CIX3Z-36E90

SINGLE-WALL

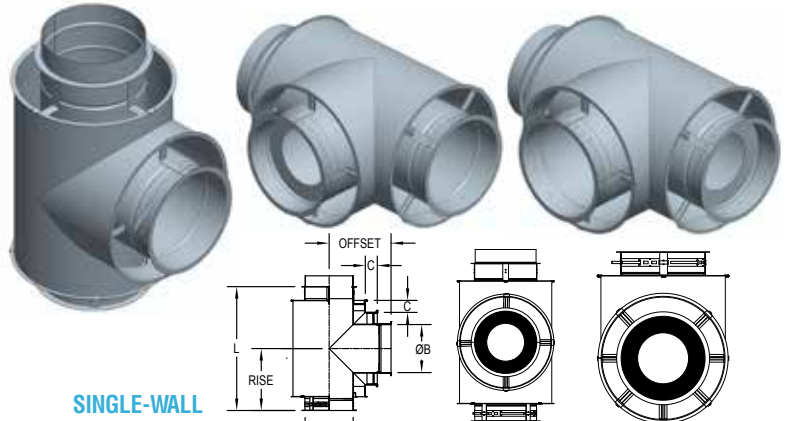
Ø	C	D	E	HEIGHT	OFFSET	PRODUCT CODE
5"	4 7/16"	6 5/8"	3 3/32"	6 5/8"	13 1/4"	SCL5E90
6"	4 5/8"	7 1/8"	3 17/32"	7 1/8"	14 1/4"	SCL6E90
7"	4 27/32"	7 5/8"	3 15/16"	7 5/8"	15 1/4"	SCL7E90
8"	5 1/32"	8 1/8"	4 3/8"	8 1/8"	16 1/4"	SCL8E90
9"	5 1/4"	8 5/8"	4 25/32"	8 5/8"	17 1/4"	SCL9E90
10"	5 15/32"	9 1/8"	5 5/32"	9 1/8"	18 1/4"	SCL10E90
11"	5 21/32"	9 5/8"	5 5/8"	9 5/8"	19 1/4"	SCL11E90
12"	5 7/8"	10 1/8"	6"	10 1/8"	20 1/4"	SCL12E90
13"	6 3/32"	10 5/8"	6 13/32"	10 5/8"	21 1/4"	SCL13E90
14"	6 9/32"	11 1/8"	6 27/32"	11 1/8"	22 1/4"	SCL14E90
16"	6 23/32"	12 1/8"	7 21/32"	12 1/8"	24 1/4"	SCL16E90
18"	7 1/8"	13 1/8"	8 1/2"	13 1/8"	26 1/4"	SCL18E90
20"	7 17/32"	14 1/8"	9 5/16"	14 1/8"	28 1/4"	SCL20E90
22"	7 15/16"	15 1/8"	10 5/32"	15 1/8"	30 1/4"	SCL22E90
24"	8 3/8"	16 1/8"	10 31/32"	16 1/8"	32 1/4"	SCL24E90
26"	8 25/32"	17 1/8"	11 13/16"	17 1/8"	34 1/4"	SCL26E90
28"	9 3/16"	18 1/8"	12 5/8"	18 1/8"	36 1/4"	SCL28E90
30"	9 19/32"	19 1/8"	13 15/32"	19 1/8"	38 1/4"	SCL30E90
32"	10 1/32"	20 1/8"	14 9/32"	20 1/8"	40 1/4"	SCL32E90
34"	10 7/16"	21 1/8"	15 1/8"	21 1/8"	42 1/4"	SCL34E90
36"	10 27/32"	22 1/8"	15 31/32"	22 1/8"	44 1/4"	SCL36E90

Materials available: 304, 316.
Flow resistance: K = 0.3

Tees

90° Tees and 90° Tees with a Dam

Used to change direction at 90° breeching. Can be used as an inspection access in horizontal runs. An optional Dam can be ordered in position #1 or #2 for protection against fluids running out while cleaning. Included with CIX3Z: One (1) Locking Inner "V" Band (BSI), one (1) Centering Flue Extension (PR-C0794) and one (1) Locking Outer Band (BSE). Included with SCL: One (1) Locking Inner "V" Band (BSI) and one (1) Centering Flue Extension (PR-C0794).



ZERO CLEARANCE 3" INSULATED

Ø	EFFECTIVE LENGTH	C	RISE	OFFSET	STANDARD	OPTION D1 OR D2
5"	19 11/16"	2"	9 27/32"	9 27/32"	CIX3Z-5T90	CIX3Z-5T90D1 or 2
6"	20 11/16"	2"	10 11/32"	10 11/32"	CIX3Z-6T90	CIX3Z-6T90D1 or 2
7"	21 11/16"	2"	10 27/32"	10 27/32"	CIX3Z-7T90	CIX3Z-7T90D1 or 2
8"	22 11/16"	2"	11 11/32"	11 11/32"	CIX3Z-8T90	CIX3Z-8T90D1 or 2
9"	23 11/16"	2"	11 27/32"	11 27/32"	CIX3Z-9T90	CIX3Z-9T90D1 or 2
10"	24 11/16"	2"	12 11/32"	12 11/32"	CIX3Z-10T90	CIX3Z-10T90D1 or 2
11"	25 11/16"	2"	12 27/32"	12 27/32"	CIX3Z-11T90	CIX3Z-11T90D1 or 2
12"	26 11/16"	2"	13 11/32"	13 11/32"	CIX3Z-12T90	CIX3Z-12T90D1 or 2
13"	27 11/16"	3"	13 27/32"	13 27/32"	CIX3Z-13T90	CIX3Z-13T90D1 or 2
14"	30 11/16"	3"	15 11/32"	15 11/32"	CIX3Z-14T90	CIX3Z-14T90D1 or 2
16"	32 11/16"	3"	16 11/32"	16 11/32"	CIX3Z-16T90	CIX3Z-16T90D1 or 2
18"	34 11/16"	3"	17 11/32"	17 11/32"	CIX3Z-18T90	CIX3Z-18T90D1 or 2
20"	36 11/16"	3"	18 11/32"	18 11/32"	CIX3Z-20T90	CIX3Z-20T90D1 or 2
22"	38 11/16"	3"	19 11/32"	19 11/32"	CIX3Z-22T90	CIX3Z-22T90D1 or 2
24"	40 11/16"	3"	20 11/32"	20 11/32"	CIX3Z-24T90	CIX3Z-24T90D1 or 2
26"	46 11/16"	5"	23 11/32"	23 11/32"	CIX3Z-26T90	CIX3Z-26T90D1 or 2
28"	48 11/16"	5"	24 11/32"	24 11/32"	CIX3Z-28T90	CIX3Z-28T90D1 or 2
30"	50 11/16"	5"	25 11/32"	25 11/32"	CIX3Z-30T90	CIX3Z-30T90D1 or 2
32"	52 11/16"	5"	26 11/32"	26 11/32"	CIX3Z-32T90	CIX3Z-32T90D1 or 2
34"	54 11/16"	5"	27 11/32"	27 11/32"	CIX3Z-34T90	CIX3Z-34T90D1 or 2
36"	56 11/16"	5"	28 11/32"	28 11/32"	CIX3Z-36T90	CIX3Z-36T90D1 or 2

SINGLE-WALL

Ø	EFFECTIVE LENGTH	C	RISE	OFFSET	STANDARD	OPTION D1 OR D2
5"	12 1/16"	0"	6 1/32"	6 1/32"	SCL5T90	SCL5T90D1 or 2
6"	13 1/16"	0"	6 17/32"	6 17/32"	SCL6T90	SCL6T90D1 or 2
7"	14 1/16"	0"	7 1/32"	7 1/32"	SCL7T90	SCL7T90D1 or 2
8"	15 1/16"	0"	7 17/32"	7 17/32"	SCL8T90	SCL8T90D1 or 2
9"	16 1/16"	0"	8 1/32"	8 1/32"	SCL9T90	SCL9T90D1 or 2
10"	17 1/16"	0"	8 17/32"	8 17/32"	SCL10T90	SCL10T90D1 or 2
11"	18 1/16"	0"	9 1/32"	9 1/32"	SCL11T90	SCL11T90D1 or 2
12"	19 1/16"	0"	9 17/32"	9 17/32"	SCL12T90	SCL12T90D1 or 2
13"	20 1/16"	0"	10 1/32"	10 1/32"	SCL13T90	SCL13T90D1 or 2
14"	21 1/16"	0"	10 17/32"	10 17/32"	SCL14T90	SCL14T90D1 or 2
16"	23 1/16"	0"	11 17/32"	11 17/32"	SCL16T90	SCL16T90D1 or 2
18"	25 1/16"	0"	12 17/32"	12 17/32"	SCL18T90	SCL18T90D1 or 2
20"	27 1/16"	0"	13 17/32"	13 17/32"	SCL20T90	SCL20T90D1 or 2
22"	29 1/16"	0"	14 17/32"	14 17/32"	SCL22T90	SCL22T90D1 or 2
24"	31 1/16"	0"	15 17/32"	15 17/32"	SCL24T90	SCL24T90D1 or 2
26"	33 1/16"	0"	16 17/32"	16 17/32"	SCL26T90	SCL26T90D1 or 2
28"	35 1/16"	0"	17 17/32"	17 17/32"	SCL28T90	SCL28T90D1 or 2
30"	37 1/16"	0"	18 17/32"	18 17/32"	SCL30T90	SCL30T90D1 or 2
32"	39 1/16"	0"	19 17/32"	19 17/32"	SCL32T90	SCL32T90D1 or 2
34"	41 1/16"	0"	20 17/32"	20 17/32"	SCL34T90	SCL34T90D1 or 2
36"	43 1/16"	0"	21 17/32"	21 17/32"	SCL36T90	SCL36T90D1 or 2

Also available with smaller snout ØB. Code: CIX3Z-ØT90ØB or SCLØT90ØB

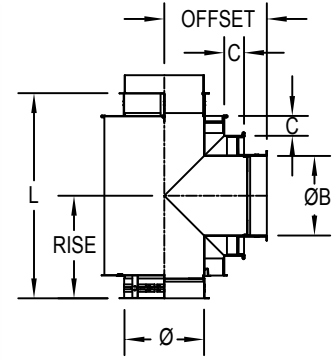
Two different position option of a Dam inside the flue is available. Code for position 1 or 2: CIX3Z-ØT90D(1 or 2) or SCLØT90D(1 or 2).

Materials available: 304, 316. Flow resistance: K = 1.25

Tees

90° Tees with Nozzle

Used to change direction at 90° breeching, and provides access for installation or inspection of sprinkler head. 1" NPT nipple. One Locking V-Band (BSI), one Centering Flue Extension (PR-C0794) and one Locking Outer Band (BSE) included.



ZERO CLEARANCE 3" INSULATED

SINGLE-WALL

Ø	EFFECTIVE LENGTH	C	RISE	OFFSET	PRODUCT CODE	Ø	EFFECTIVE LENGTH	C	RISE	OFFSET	PRODUCT CODE
5"	19 11/16"	2"	9 27/32"	9 27/32"	CIX3Z-5T90N	5"	12 1/16"	0"	6 1/32"	6 1/32"	SCL5T90N
6"	20 11/16"	2"	10 11/32"	10 11/32"	CIX3Z-6T90N	6"	13 1/16"	0"	6 17/32"	6 17/32"	SCL6T90N
7"	21 11/16"	2"	10 27/32"	10 27/32"	CIX3Z-7T90N	7"	14 1/16"	0"	7 1/32"	7 1/32"	SCL7T90N
8"	22 11/16"	2"	11 11/32"	11 11/32"	CIX3Z-8T90N	8"	15 1/16"	0"	7 17/32"	7 17/32"	SCL8T90N
9"	23 11/16"	2"	11 27/32"	11 27/32"	CIX3Z-9T90N	9"	16 1/16"	0"	8 1/32"	8 1/32"	SCL9T90N
10"	24 11/16"	2"	12 11/32"	12 11/32"	CIX3Z-10T90N	10"	17 1/16"	0"	8 17/32"	8 17/32"	SCL10T90N
11"	25 11/16"	2"	12 27/32"	12 27/32"	CIX3Z-11T90N	11"	18 1/16"	0"	9 1/32"	9 1/32"	SCL11T90N
12"	26 11/16"	2"	13 11/32"	13 11/32"	CIX3Z-12T90N	12"	19 1/16"	0"	9 17/32"	9 17/32"	SCL12T90N
13"	27 11/16"	3"	13 27/32"	13 27/32"	CIX3Z-13T90N	13"	20 1/16"	0"	10 1/32"	10 1/32"	SCL13T90N
14"	30 11/16"	3"	15 11/32"	15 11/32"	CIX3Z-14T90N	14"	21 1/16"	0"	10 17/32"	10 17/32"	SCL14T90N
16"	32 11/16"	3"	16 11/32"	16 11/32"	CIX3Z-16T90N	16"	23 1/16"	0"	11 17/32"	11 17/32"	SCL16T90N
18"	34 11/16"	3"	17 11/32"	17 11/32"	CIX3Z-18T90N	18"	25 1/16"	0"	12 17/32"	12 17/32"	SCL18T90N
20"	36 11/16"	3"	18 11/32"	18 11/32"	CIX3Z-20T90N	20"	27 1/16"	0"	13 17/32"	13 17/32"	SCL20T90N
22"	38 11/16"	3"	19 11/32"	19 11/32"	CIX3Z-22T90N	22"	29 1/16"	0"	14 17/32"	14 17/32"	SCL22T90N
24"	40 11/16"	3"	20 11/32"	20 11/32"	CIX3Z-24T90N	24"	31 1/16"	0"	15 17/32"	15 17/32"	SCL24T90N
26"	46 11/16"	5"	23 11/32"	23 11/32"	CIX3Z-26T90N	26"	33 1/16"	0"	16 17/32"	16 17/32"	SCL26T90N
28"	48 11/16"	5"	24 11/32"	24 11/32"	CIX3Z-28T90N	28"	35 1/16"	0"	17 17/32"	17 17/32"	SCL28T90N
30"	50 11/16"	5"	25 11/32"	25 11/32"	CIX3Z-30T90N	30"	37 1/16"	0"	18 17/32"	18 17/32"	SCL30T90N
32"	52 11/16"	5"	26 11/32"	26 11/32"	CIX3Z-32T90N	32"	39 1/16"	0"	19 17/32"	19 17/32"	SCL32T90N
34"	54 11/16"	5"	27 11/32"	27 11/32"	CIX3Z-34T90N	34"	41 1/16"	0"	20 17/32"	20 17/32"	SCL34T90N
36"	56 11/16"	5"	28 11/32"	28 11/32"	CIX3Z-36T90N	36"	43 1/16"	0"	21 17/32"	21 17/32"	SCL36T90N

Materials available: 304, 316.

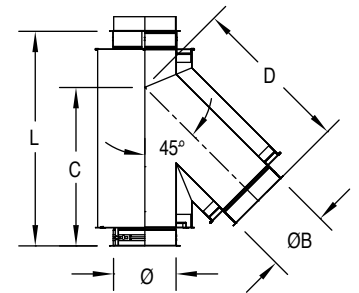
Also available with smaller snout ØB. Code: CIX3Z-ØT90NØB or SCLØT90NØB

Flow resistance: K = 1.25 + an unknown value for the sprinkler head. Contact sprinkler head manufacturer.

Tees

45° Tees

Used to change direction at 45° breeching at low resistance flow. Included with CIX3Z: One (1) Locking Inner "V" Band (BSI), one (1) Centering Flue Extension (PR-C0794) and one (1) Locking Outer Band (BSE). Included with SCL: One (1) Locking Inner "V" Band (BSI) and one (1) Centering Flue Extension (PR-C0794).



ZERO CLEARANCE 3" INSULATED

SINGLE-WALL

Ø	EFFECTIVE LENGTH	C = D, IF ØB = Ø	PRODUCT CODE	Ø	EFFECTIVE LENGTH	C = D, IF ØB = Ø	PRODUCT CODE
5"	24 1/4"	17 21/32"	CIX3Z-5T45	5"	16 5/32"	10 5/8"	SCL5T45
6"	25 21/32"	18 27/32"	CIX3Z-6T45	6"	17 19/32"	11 13/16"	SCL6T45
7"	27 3/32"	20 1/16"	CIX3Z-7T45	7"	19"	13 1/32"	SCL7T45
8"	28 1/2"	21 9/32"	CIX3Z-8T45	8"	20 13/32"	14 1/4"	SCL8T45
9"	29 29/32"	22 15/32"	CIX3Z-9T45	9"	21 13/16"	15 7/16"	SCL9T45
10"	31 5/16"	23 11/16"	CIX3Z-10T45	10"	23 1/4"	16 21/32"	SCL10T45
11"	32 3/4"	24 7/8"	CIX3Z-11T45	11"	24 21/32"	17 7/8"	SCL11T45
12"	34 5/32"	26 3/32"	CIX3Z-12T45	12"	26 1/16"	19 1/16"	SCL12T45
13"	35 9/16"	27 5/16"	CIX3Z-13T45	13"	27 15/32"	20 9/32"	SCL13T45
14"	38 31/32"	29 1/2"	CIX3Z-14T45	14"	28 29/32"	21 15/32"	SCL14T45
16"	41 13/16"	31 15/16"	CIX3Z-16T45	16"	31 23/32"	23 29/32"	SCL16T45
18"	44 5/8"	34 11/32"	CIX3Z-18T45	18"	34 9/16"	26 5/16"	SCL18T45
20"	47 15/32"	36 3/4"	CIX3Z-20T45	20"	37 3/8"	28 23/32"	SCL20T45
22"	50 9/32"	39 5/32"	CIX3Z-22T45	22"	40 7/32"	31 5/32"	SCL22T45
24"	53 1/8"	41 19/32"	CIX3Z-24T45	24"	43 1/32"	33 9/16"	SCL24T45
26"	59 15/16"	46"	CIX3Z-26T45	26"	45 7/8"	35 31/32"	SCL26T45
28"	62 25/32"	48 13/32"	CIX3Z-28T45	28"	48 11/16"	38 3/8"	SCL28T45
30"	65 19/32"	50 13/16"	CIX3Z-30T45	30"	51 17/32"	40 13/16"	SCL30T45
32"	68 7/16"	53 1/4"	CIX3Z-32T45	32"	54 11/32"	43 7/32"	SCL32T45
34"	71 1/4"	55 21/32"	CIX3Z-34T45	34"	57 3/16"	45 5/8"	SCL34T45
36"	74 3/32"	58 1/16"	CIX3Z-36T45	36"	60"	48 1/32"	SCL36T45

Materials available: 304, 316.

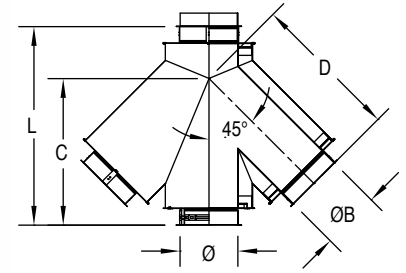
Also available with smaller snout ØB. Code : CIX3Z-ØT45ØB or SCLØT45ØB

Flow resistance: K = 0.40

Tees

Double 45° Tee, Smaller Snout

Used to centrally connect two appliance manifolds to a common duct. Included with CIX3Z: One (1) Locking Inner "V" Band (BSI), one (1) Centering Flue Extension (PR-C0794) and one (1) Locking Outer Band (BSE). Included with SCL: One (1) Locking Inner "V" Band (BSI) and one (1) Centering Flue Extension (PR-C0794).



ZERO CLEARANCE 3" INSULATED

SINGLE-WALL

Ø	EFFECTIVE LENGTH	C = D, IF ØB = Ø	PRODUCT CODE	Ø	EFFECTIVE LENGTH	C = D, IF ØB = Ø	PRODUCT CODE
5"	24 1/4"	17 21/32"	CIX3Z-5TD45	5"	16 5/32"	10 5/8"	SCL5TD45
6"	25 21/32"	18 27/32"	CIX3Z-6TD45	6"	17 19/32"	11 13/16"	SCL6TD45
7"	27 3/32"	20 1/16"	CIX3Z-7TD45	7"	19"	13 1/32"	SCL7TD45
8"	28 1/2"	21 9/32"	CIX3Z-8TD45	8"	20 13/32"	14 1/4"	SCL8TD45
9"	29 29/32"	22 15/32"	CIX3Z-9TD45	9"	21 13/16"	15 7/16"	SCL9TD45
10"	31 5/16"	23 11/16"	CIX3Z-10TD45	10"	23 1/4"	16 21/32"	SCL10TD45
11"	32 3/4"	24 7/8"	CIX3Z-11TD45	11"	24 21/32"	17 7/8"	SCL11TD45
12"	34 5/32"	26 3/32"	CIX3Z-12TD45	12"	26 1/16"	19 1/16"	SCL12TD45
13"	35 9/16"	27 5/16"	CIX3Z-13TD45	13"	27 15/32"	20 9/32"	SCL13TD45
14"	38 31/32"	29 1/2"	CIX3Z-14TD45	14"	28 29/32"	21 15/32"	SCL14TD45
16"	41 13/16"	31 15/16"	CIX3Z-16TD45	16"	31 23/32"	23 29/32"	SCL16TD45
18"	44 5/8"	34 11/32"	CIX3Z-18TD45	18"	34 9/16"	26 5/16"	SCL18TD45
20"	47 15/32"	36 3/4"	CIX3Z-20TD45	20"	37 3/8"	28 23/32"	SCL20TD45
22"	50 9/32"	39 5/32"	CIX3Z-22TD45	22"	40 7/32"	31 5/32"	SCL22TD45
24"	53 1/8"	41 19/32"	CIX3Z-24TD45	24"	43 1/32"	33 9/16"	SCL24TD45
26"	59 15/16"	46"	CIX3Z-26TD45	26"	45 7/8"	35 31/32"	SCL26TD45
28"	62 25/32"	48 13/32"	CIX3Z-28TD45	28"	48 11/16"	38 3/8"	SCL28TD45
30"	65 19/32"	50 13/16"	CIX3Z-30TD45	30"	51 17/32"	40 13/16"	SCL30TD45
32"	68 7/16"	53 1/4"	CIX3Z-32TD45	32"	54 11/32"	43 7/32"	SCL32TD45
34"	71 1/4"	55 21/32"	CIX3Z-34TD45	34"	57 3/16"	45 5/8"	SCL34TD45
36"	74 3/32"	58 1/16"	CIX3Z-36TD45	36"	60"	48 1/32"	SCL36TD45

Materials available: 304, 316.

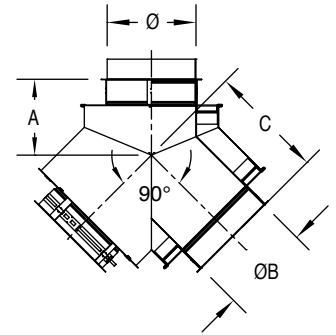
Also available with smaller snout ØB. Code : CIX3Z-ØTD45ØB or SCLØTD45ØB

Flow resistance: K = 0.40

Tees

Y Tee

Used to provide low-pressure drop for joining two appliances. Can be used as a single clean out toward each 90° direction change. Offers same diameter on all branches, but available with smaller snout. Included with CIX3Z: One (1) Locking Inner "V" Band (BSI), one (1) Centering Flue Extension (PR-C0794) and one (1) Locking Outer Band (BSE). Include with SCL: One (1) Locking Inner "V" Band (BSI) and one (1) Centering Flue Extension (PR-C0794).



ZERO CLEARANCE 3" INSULATED

SINGLE-WALL

Ø	A	C	PRODUCT CODE	Ø	EFFECTIVE LENGTH	C = D, IF ØB = Ø	PRODUCT CODE
5"	6 19/32"	9 27/32"	CIX3Z-5TY	5"	5 9/16"	7 1/32"	SCL5TY
6"	6 13/16"	10 11/32"	CIX3Z-6TY	6"	5 3/4"	7 17/32"	SCL6TY
7"	7 1/32"	10 27/32"	CIX3Z-7TY	7"	5 31/32"	8 1/32"	SCL7TY
8"	7 7/32"	11 11/32"	CIX3Z-8TY	8"	6 5/32"	8 17/32"	SCL8TY
9"	7 7/16"	11 27/32"	CIX3Z-9TY	9"	6 3/8"	9 1/32"	SCL9TY
10"	7 5/8"	12 11/32"	CIX3Z-10TY	10"	6 19/32"	9 17/32"	SCL10TY
11"	7 27/32"	12 27/32"	CIX3Z-11TY	11"	6 25/32"	10 1/32"	SCL11TY
12"	8 1/16"	13 11/32"	CIX3Z-12TY	12"	7"	10 17/32"	SCL12TY
13"	8 1/4"	13 27/32"	CIX3Z-13TY	13"	7 7/32"	11 1/32"	SCL13TY
14"	9 15/32"	15 11/32"	CIX3Z-14TY	14"	7 13/32"	11 17/32"	SCL14TY
16"	9 7/8"	16 11/32"	CIX3Z-16TY	16"	7 27/32"	12 17/32"	SCL16TY
18"	10 9/32"	17 11/32"	CIX3Z-18TY	18"	8 1/4"	13 17/32"	SCL18TY
20"	10 23/32"	18 11/32"	CIX3Z-20TY	20"	8 21/32"	14 17/32"	SCL20TY
22"	10 15/16"	19 11/32"	CIX3Z-22TY	22"	9 1/16"	15 17/32"	SCL22TY
24"	11 17/32"	20 11/32"	CIX3Z-24TY	24"	9 1/2"	16 17/32"	SCL24TY
26"	13 15/16"	23 11/32"	CIX3Z-26TY	26"	9 29/32"	17 17/32"	SCL26TY
28"	14 3/8"	24 11/32"	CIX3Z-28TY	28"	10 5/16"	18 17/32"	SCL28TY
30"	14 25/32"	25 11/32"	CIX3Z-30TY	30"	10 23/32"	19 17/32"	SCL30TY
32"	15 3/16"	26 11/32"	CIX3Z-32TY	32"	11 5/32"	20 17/32"	SCL32TY
34"	15 19/32"	27 11/32"	CIX3Z-34TY	34"	11 9/16"	21 17/32"	SCL34TY
36"	16 1/32"	28 11/32"	CIX3Z-36TY	36"	11 31/32"	22 17/32"	SCL36TY

Materials available: 304, 316.

Also available with smaller snout ØB. Code : CIX3Z-ØTYØB or SCLØTYØB

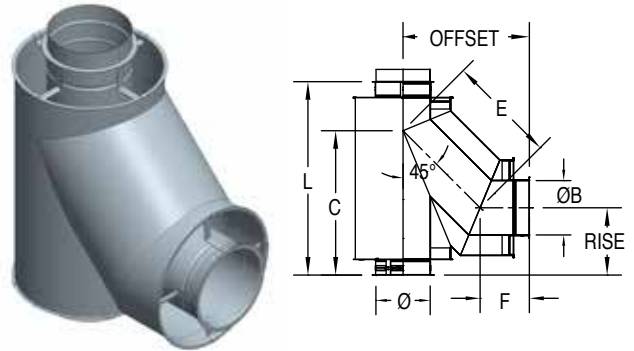
Flow resistance: K = 0.6

Tees

Lateral Tee

NOTE: LATERAL TEE (BT) ONLY AVAILABLE UP TO 24".
FOR SIZES 26"-36", USE A COMBINATION OF 450 TEE (T45) AND 450 ELBOW (E45).

Used to change direction at 90° at lower resistance flow.
 Included with CIX3Z: One (1) Locking Inner "V" Band (BSI), one (1) Centering Flue Extension (PR-C0794) and one (1) Locking Outer Band (BSE).
 Included with SCL: One (1) Locking Inner "V" Band (BSI) and one (1) Centering Flue Extension (PR-C0794).



ZERO CLEARANCE 3" INSULATED

SINGLE-WALL

Ø	EFFECTIVE LENGTH	C	E	F	OFFSET	RISE	PRODUCT CODE	Ø	EFFECTIVE LENGTH	C	E	F	OFFSET	RISE	PRODUCT CODE
5"	24 1/4"	17 21/32"	13 1/16"	6 19/32"	15 13/16"	8 7/16"	CIX3Z-5BT	5"	16 5/32"	10 5/8"	9 9/16"	5 9/16"	12 5/16"	3 27/32"	SCL5BT
6"	25 21/32"	18 27/32"	14 1/16"	6 13/16"	16 3/4"	8 15/16"	CIX3Z-6BT	6"	17 19/32"	11 13/16"	10 9/16"	5 3/4"	13 7/32"	4 11/32"	SCL6BT
7"	27 3/32"	20 1/16"	15 1/16"	7"	17 21/32"	9 7/16"	CIX3Z-7BT	7"	19"	13 1/32"	11 9/16"	5 31/32"	14 5/32"	4 27/32"	SCL7BT
8"	28 1/2"	21 9/32"	16 1/16"	7 7/32"	18 9/16"	9 15/16"	CIX3Z-8BT	8"	20 13/32"	14 1/4"	12 9/16"	6 5/32"	15 1/16"	5 11/32"	SCL8BT
9"	29 29/32"	22 15/32"	17 1/16"	7 7/16"	19 15/32"	10 7/16"	CIX3Z-9BT	9"	21 13/16"	15 7/16"	13 9/16"	6 3/8"	15 31/32"	5 27/32"	SCL9BT
10"	31 5/16"	23 11/16"	18 1/16"	7 5/8"	20 13/32"	10 15/16"	CIX3Z-10BT	10"	23 1/4"	16 21/32"	14 9/16"	6 19/32"	16 7/8"	6 11/32"	SCL10BT
11"	32 3/4"	24 29/32"	19 1/16"	7 27/32"	21 5/16"	11 7/16"	CIX3Z-11BT	11"	24 21/32"	17 7/8"	15 9/16"	6 25/32"	17 13/16"	6 27/32"	SCL11BT
12"	34 5/32"	26 3/32"	20 1/16"	8 1/16"	22 7/32"	11 15/16"	CIX3Z-12BT	12"	26 1/16"	19 1/16"	16 9/16"	7"	18 23/32"	7 11/32"	SCL12BT
13"	35 9/16"	27 5/16"	21 1/16"	8 1/4"	23 5/32"	12 7/16"	CIX3Z-13BT	13"	27 15/32"	20 9/32"	17 9/16"	7 7/32"	19 5/8"	7 27/32"	SCL13BT
14"	38 31/32"	29 1/2"	23 1/16"	9 15/32"	25 3/4"	13 7/32"	CIX3Z-14BT	14"	28 29/32"	21 15/32"	18 9/16"	7 13/32"	20 17/32"	8 11/32"	SCL14BT
16"	41 13/16"	31 15/16"	25 1/16"	9 7/8"	27 19/32"	14 7/32"	CIX3Z-16BT	16"	31 23/32"	23 29/32"	20 9/16"	7 27/32"	22 3/8"	9 11/32"	SCL16BT
18"	44 5/8"	34 11/32"	27 1/16"	10 9/32"	29 13/32"	15 7/32"	CIX3Z-18BT	18"	34 9/16"	26 5/16"	22 9/16"	8 1/4"	24 3/16"	10 11/32"	SCL18BT
20"	47 15/32"	36 3/4"	29 1/16"	10 23/32"	31 1/4"	16 7/32"	CIX3Z-20BT	20"	37 3/8"	28 23/32"	24 9/16"	8 21/32"	26 1/32"	11 11/32"	SCL20BT
22"	50 9/32"	39 5/32"	31 1/16"	11 1/8"	33 1/16"	17 7/32"	CIX3Z-22BT	22"	40 7/32"	31 5/32"	26 9/16"	9 1/16"	27 27/32"	12 11/32"	SCL22BT
24"	53 1/8"	41 9/16"	33 1/16"	11 17/32"	34 29/32"	18 7/32"	CIX3Z-24BT	24"	43 1/32"	33 9/16"	28 9/16"	9 1/2"	29 11/16"	13 11/32"	SCL24BT

Materials available: 304, 316.
 Also available with smaller snout ØB. Code : CIX3Z-ØTYØB or SCLØTYØB
 Flow resistance: K = 0.55

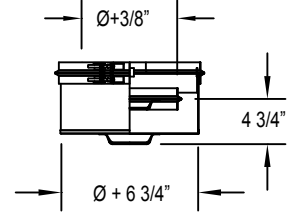
Tee Accessories & Access

Tee Cap

Used to close, seal or provide access for cleanout unused tee ports. Included with CIX3Z: One (1) disc, one (1) SMALL Locking Inner "V" Band (BSI), one (1) LARGE Locking Inner "V" Band, one (1) outer casing, one (1) insulation wrap, three (3) insulation disc. Included with SCL: One (1) disc, one (1) SMALL Locking Inner "V" Band (BSI).

Ø	EFFECTIVE LENGTH	ZERO CLEARANCE 3" INSULATED	EFFECTIVE LENGTH	SINGLE-WALL
5" to 36"	4 3/4"	CIX3Z-ØTC	1"	SCLØTC

Material available: 304, 316.

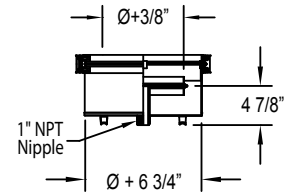


Drain Tee Cap

Used to close and seal unused tee ports and to provide drain point for grease or condensation at the base of a vertical duct run. 1" NPT nipple. Included with CIX3Z: One (1) disc, one (1) SMALL Locking Inner "V" Band (BSI), one (1) LARGE Locking Inner "V" Band, one (1) outer casing, one (1) insulation wrap, three (3) insulation disc. Included with SCL: One (1) disc, one (1) SMALL Locking Inner "V" Band (BSI).

Ø	EFFECTIVE LENGTH	ZERO CLEARANCE 3" INSULATED	SINGLE-WALL
5" to 36"	4 7/8"	CIX3Z-ØDTC	SCLØDTC

Materials available: 304, 316.

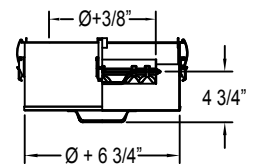


No Tool Access Tee Cap

Used to close and seal unused tee ports. Provides easy and toolless access for inspection. Included with CIX3Z: One (1) disc, one (1) annular disc with rivnuts, one (1) SMALL Locking Inner "V" Band (BSI), one (1) outer casing with latches, one (1) insulation wrap, three (3) insulation disc, wing screws and hardware. Included with SCL: One (1) disc, one (1) annular disc with rivnuts, one (1) SMALL Locking Inner "V" Band (BSI), wing screws and hardware.

Ø	EFFECTIVE LENGTH	ZERO CLEARANCE 3" INSULATED	EFFECTIVE LENGTH	SINGLE-WALL
5" to 36"	4 3/4"	CIX3Z-ØNTTC	1"	SCLØNTTC

Materials available: 304, 316.

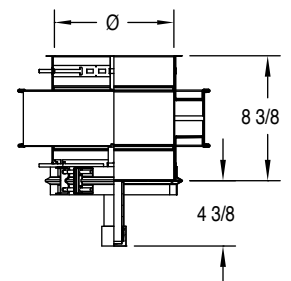


Drain Bucket

Used at the base of a vertical riser as a drain reservoir and to provide cleanout access. Made of a short Length with a drain tee cap. 1" NPT nipple. Included with CIX3Z: One (1) small length plus one (1) drain Tee Cap (DTC). Included with SCL: One (1) small length plus one (1) drain Tee Cap (DTC).

Ø	EFFECTIVE LENGTH	ZERO CLEARANCE 3" INSULATED	SINGLE-WALL
5" to 36"	8 3/4"	CIX3Z-ØDB	SCLØDB

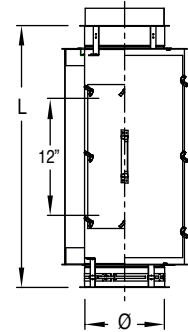
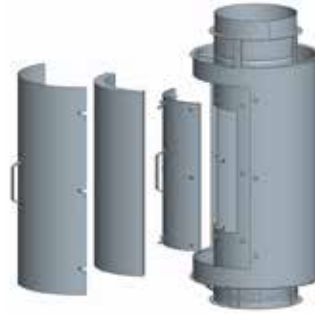
Materials available: 304, 316.



Tee Accessories & Access

No Tool Inline Access Door

Used for inspection and cleaning. Greaseproof and fire-tight seal. Included with CIX3Z: One (1) Locking Inner "V" Band (BSI), one (1) Centering Flue Extension (PR-C0794), one (1) locking outer band (BSE), one (1) fiber high temperature gasket, one (1) silicone gasket, one (1) inner door, one (1) outer door and hardware (wing screws) for both access doors. Included with SCL: One (1) Locking Inner "V" Band (BSI), one (1) Centering Flue Extension (PR-C0794), one (1) fiber high temperature gasket, one (1) silicone gasket, one (1) inner door, and hardware (wing screws) for the access door. Replacement gaskets available.



Ø	LENGTH	EFFECTIVE LENGTH	ZERO CLEARANCE 3" INSULATED	SINGLE-WALL
5" to 36"	26"	26 3/8"	CIX3Z-ØADL26	SCLØADL26
5" to 36"	36"	36 1/16"	CIX3Z-ØADL36	SCLØADL36

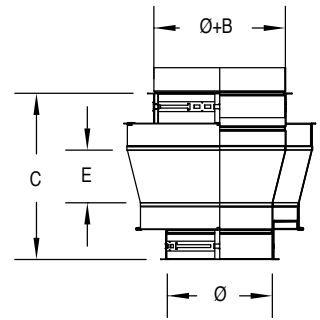
Materials available: 304, 316.

Flow resistance: $K = 0.30$ (eff. length [ft] / Ø [in]).

Connection Accessories

Tapered Increaser

Used when a pipe diameter change is required. Tapered Increasers are typically used to provide an increase in duct size, but they may be also used (in the opposite orientation) to reduce the size of the duct. When planning to use this part as a Reducer, consider and order it from the factory as a special part, since the accompanying hardware will vary slightly. Caution should be exercised in reducing duct sizes due to the resultant increase in flow resistance. Included with CIX3Z: One (1) Locking Inner "V" Band (BSI), one (1) Centering Flue Extension (PR-C0794) and one (1) Locking Outer Band (BSE). Included with SCL: One (1) Locking Inner "V" Band (BSI) and one (1) Centering Flue Extension (PR-C0794).



Ø	B	EFFECTIVE LENGTH	E	ZERO CLEARANCE 3" INSULATED	SINGLE-WALL
From Ø5" to Ø14", diameter increments by 1"	1"	10 3/4"	2"	CIX3Z-ØTIN(Ø+B)	SCLØTIN(Ø+B)
	2"	12 3/4"	4"		
	3"	14 3/4"	6"		
	4"	16 3/4"	8"		
	5"	18 3/4"	10"		
	6"	20 3/4"	12"		
From Ø16" to Ø36", diameter increments by 2"	2"	12 3/4"	4"	CIX3Z-ØTIN(Ø+B)	SCLØTIN(Ø+B)
	4"	16 3/4"	8"		
	6"	20 3/4"	12"		

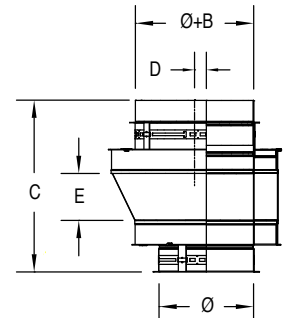
Materials available: 304, 316.

Flow resistance for increaser: $K = 0.63 [1 - (\frac{\text{Ø}}{\text{Ø+B}})^2]^2 / (\frac{\text{Ø}}{\text{Ø+B}})^4$

Flow resistance for reducer: $K = 0.19 [1 - (\frac{\text{Ø}}{\text{Ø+B}})^2]^2 / (\frac{\text{Ø}}{\text{Ø+B}})^4$

Eccentric Tapered Increaser

Used when a pipe diameter change and a flat bottom on horizontal runs is required. Included with CIX3Z: One (1) Locking Inner "V" Band (BSI), one (1) Centering Flue Extension (PR-C0794) and one (1) Locking Outer Band (BSE). For SCL: One (1) Locking Inner "V" Band (BSI) and one (1) Centering Flue Extension (PR-C0794).



Ø	B	EFFECTIVE LENGTH	D	E	ZERO CLEARANCE 3" INSULATED	SINGLE-WALL
From Ø5" to Ø14", diameter increments by 1"	1"	10 3/4"	1/2"	2"	CIX3Z-ØETIN(Ø+B)	SCLØETIN(Ø+B)
	2"	12 3/4"	1"	4"		
	3"	14 3/4"	1 1/2"	6"		
	4"	16 3/4"	2"	8"		
	5"	18 3/4"	2 1/2"	10"		
	6"	20 3/4"	3"	12"		
From Ø16" to Ø36", diameter increments by 2"	2"	12 3/4"	1"	4"	CIX3Z-ØETIN(Ø+B)	SCLØETIN(Ø+B)
	4"	16 3/4"	2"	8"		
	6"	20 3/4"	3"	12"		

Materials available: 304, 316, Galvalume.

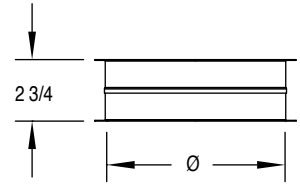
Flow resistance for eccentric increaser: $K = 0.63 [1 - (\frac{\text{Ø}}{\text{Ø+B}})^2]^2 / (\frac{\text{Ø}}{\text{Ø+B}})^4$

Flow resistance for eccentric reducer: $K = 0.19 [1 - (\frac{\text{Ø}}{\text{Ø+B}})^2]^2 / (\frac{\text{Ø}}{\text{Ø+B}})^4$

Adaptors

Round Flanged Hood Adaptor

Used to connect the first duct section to hood. Can be field welded or supplied to Hood manufacturer for installation (by others). Included with CIX3Z: One (1) Locking Inner "V" Band (BSI), one (1) Locking Outer Band (BSE). Included with SCL: One (1) Locking Inner "V" Band (BSI).



Ø	EFFECTIVE LENGTH	ZERO CLEARANCE 3" INSULATED	SINGLE-WALL
5" to 36"	2 3/4"	CIX3Z-ØRFHA	SCLØRFHA

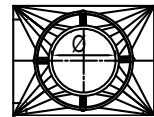
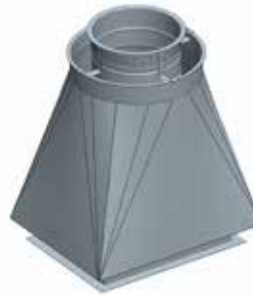
Materials available: 304, 316.
Flow resistance: $K = 0.825/\text{Ø}$

Square to Round Adaptor

Used to connect a round duct to a hood equipped with a square/rectangular collar or to connect to a square duct.

STR's are a custom part and all requests need to go through the design group at layouts@securitychimneys.com.

Custom parts are non-returnable and may require extra production time.



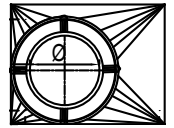
Adaptors

Eccentric Square to Round Adaptor

Used to connect a round duct to a hood equipped with a square/ rectangular collar or to connect to a square duct.

ESTR's are a custom part and all requests need to go through the design group at layouts@securitychimneys.com.

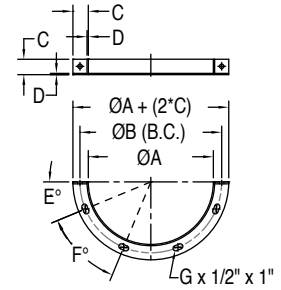
Custom parts are non-returnable and may require extra production time.



Supports

Half Angle Ring

Used for supporting and guiding the duct in horizontal runs. See installation instructions for spacing. Included with CIX3Z and SCL: One (1) HAR. Hardware for connection to structure are not included (by others).



ZERO CLEARANCE 3" INSULATED

Ø	A	B	C	D	E	F	G	PRODUCT CODE
5"	11 1/8"	12 3/4"	1 1/4"	1/8"	30"	60"	3"	CIX3Z-5HAR
6"	12 3/16"	13 13/16"	1 1/2"	1/8"	22 1/2"	45"	4"	CIX3Z-6HAR
7"	13 3/16"	15"	1 1/2"	1/8"	22 1/2"	45"	4"	CIX3Z-7HAR
8"	14 3/16"	16"	1 1/2"	1/8"	22 1/2"	45"	4"	CIX3Z-8HAR
9"	15 3/16"	17"	1 1/2"	1/8"	22 1/2"	45"	4"	CIX3Z-9HAR
10"	16 3/16"	18"	1 1/2"	1/8"	22 1/2"	45"	4"	CIX3Z-10HAR
11"	17 3/16"	19"	1 1/2"	1/8"	22 1/2"	45"	4"	CIX3Z-11HAR
12"	18 3/16"	19 3/4"	1 1/2"	1/8"	22 1/2"	45"	4"	CIX3Z-12HAR
13"	19 3/16"	20 3/4"	1 1/2"	1/8"	15"	30"	6"	CIX3Z-13HAR
14"	20 3/16"	21 3/4"	1 1/2"	1/8"	15"	30"	6"	CIX3Z-14HAR
16"	22 3/16"	23 3/4"	1 1/2"	1/8"	15"	30"	6"	CIX3Z-16HAR
18"	24 3/16"	25 3/4"	1 1/2"	1/8"	15"	30"	6"	CIX3Z-18HAR
20"	26 3/16"	28 3/8"	2"	1/8"	11 1/4"	22 1/2"	8"	CIX3Z-20HAR
22"	28 3/16"	30 3/8"	2"	1/8"	11 1/4"	22 1/2"	8"	CIX3Z-22HAR
24"	30 3/16"	32 3/8"	2"	1/8"	11 1/4"	22 1/2"	8"	CIX3Z-24HAR
26"	32 3/16"	34 3/8"	2"	1/8"	11 1/4"	22 1/2"	8"	CIX3Z-26HAR
28"	34 3/16"	36 3/8"	2"	1/8"	11 1/4"	22 1/2"	8"	CIX3Z-28HAR
30"	36 3/16"	38 3/8"	2"	1/8"	11 1/4"	22 1/2"	8"	CIX3Z-30HAR
32"	38 3/16"	40 3/8"	2"	1/8"	7 1/2"	15"	12"	CIX3Z-32HAR
34"	40 3/16"	42 3/8"	2"	1/8"	7 1/2"	15"	12"	CIX3Z-34HAR
36"	42 3/16"	44 3/8"	2"	1/8"	7 1/2"	15"	12"	CIX3Z-36HAR

SINGLE-WALL

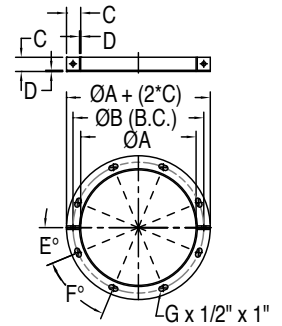
Ø	A	B	C	D	E	F	G	PRODUCT CODE
5"	5 1/16"	6 5/16"	1"	1/8"	30"	60"	3"	SCL5HAR
6"	6 3/32"	7 5/16"	1 1/4"	1/8"	30"	60"	3"	SCL6HAR
7"	7 1/8"	8 1/2"	1 1/4"	1/8"	30"	60"	3"	SCL7HAR
8"	8 1/8"	9 1/2"	1 1/4"	1/8"	30"	60"	3"	SCL8HAR
9"	9 1/8"	10 5/8"	1 1/4"	1/8"	30"	60"	3"	SCL9HAR
10"	10 1/8"	11 1/2"	1 1/4"	1/8"	30"	60"	3"	SCL10HAR
11"	11 1/8"	12 3/4"	1 1/4"	1/8"	30"	60"	3"	SCL11HAR
12"	12 3/16"	13 13/16"	1 1/2"	1/8"	22 1/2"	45"	4"	SCL12HAR
13"	13 3/16"	15"	1 1/2"	1/8"	22 1/2"	45"	4"	SCL13HAR
14"	14 3/16"	16"	1 1/2"	1/8"	22 1/2"	45"	4"	SCL14HAR
16"	16 3/16"	18"	1 1/2"	1/8"	22 1/2"	45"	4"	SCL16HAR
18"	18 3/16"	19 3/4"	1 1/2"	1/8"	22 1/2"	45"	4"	SCL18HAR
20"	20 3/16"	21 3/4"	1 1/2"	1/8"	15"	30"	6"	SCL20HAR
22"	22 3/16"	23 3/4"	1 1/2"	1/8"	15"	30"	6"	SCL22HAR
24"	24 3/16"	25 3/4"	1 1/2"	1/8"	15"	30"	6"	SCL24HAR
26"	26 3/16"	28 3/8"	2"	1/8"	11 1/4"	22 1/2"	8"	SCL26HAR
28"	28 3/16"	30 3/8"	2"	1/8"	11 1/4"	22 1/2"	8"	SCL28HAR
30"	30 3/16"	32 3/8"	2"	1/8"	11 1/4"	22 1/2"	8"	SCL30HAR
32"	32 3/16"	34 3/8"	2"	1/8"	11 1/4"	22 1/2"	8"	SCL32HAR
34"	34 3/16"	36 3/8"	2"	1/8"	11 1/4"	22 1/2"	8"	SCL34HAR
36"	36 3/16"	38 3/8"	2"	1/8"	11 1/4"	22 1/2"	8"	SCL36HAR

Materials available: SS 439.

Supports

Full Angle Ring

Used for guiding on vertical run and allow movement for thermal expansion. Included with CIX3Z and SCL: Two (2) HAR with hardware to attach them together. Hardware for connection to structure are not included (by others).



ZERO CLEARANCE 3" INSULATED

Ø	A	B	C	D	E	F	G	PRODUCT CODE
5"	11 1/8"	12 3/4"	1 1/4"	1/8"	30"	60"	6"	CIX3Z-5FAR
6"	12 3/16"	13 13/16"	1 1/2"	1/8"	22 1/2"	45"	8"	CIX3Z-6FAR
7"	13 3/16"	15"	1 1/2"	1/8"	22 1/2"	45"	8"	CIX3Z-7FAR
8"	14 3/16"	16"	1 1/2"	1/8"	22 1/2"	45"	8"	CIX3Z-8FAR
9"	15 3/16"	17"	1 1/2"	1/8"	22 1/2"	45"	8"	CIX3Z-9FAR
10"	16 3/16"	18"	1 1/2"	1/8"	22 1/2"	45"	8"	CIX3Z-10FAR
11"	17 3/16"	19"	1 1/2"	1/8"	22 1/2"	45"	8"	CIX3Z-11FAR
12"	18 3/16"	19 3/4"	1 1/2"	1/8"	22 1/2"	45"	8"	CIX3Z-12FAR
13"	19 3/16"	20 3/4"	1 1/2"	1/8"	15"	30"	12"	CIX3Z-13FAR
14"	20 3/16"	21 3/4"	1 1/2"	1/8"	15"	30"	12"	CIX3Z-14FAR
16"	22 3/16"	23 3/4"	1 1/2"	1/8"	15"	30"	12"	CIX3Z-16FAR
18"	24 3/16"	25 3/4"	1 1/2"	1/8"	15"	30"	12"	CIX3Z-18FAR
20"	26 3/16"	28 3/8"	2"	1/8"	11 1/4"	22 1/2"	16"	CIX3Z-20FAR
22"	28 3/16"	30 3/8"	2"	1/8"	11 1/4"	22 1/2"	16"	CIX3Z-22FAR
24"	30 3/16"	32 3/8"	2"	1/8"	11 1/4"	22 1/2"	16"	CIX3Z-24FAR
26"	32 3/16"	34 3/8"	2"	1/8"	11 1/4"	22 1/2"	16"	CIX3Z-26FAR
28"	34 3/16"	36 3/8"	2"	1/8"	11 1/4"	22 1/2"	16"	CIX3Z-28FAR
30"	36 3/16"	38 3/8"	2"	1/8"	11 1/4"	22 1/2"	16"	CIX3Z-30FAR
32"	38 3/16"	40 3/8"	2"	1/8"	7 1/2"	15"	24"	CIX3Z-32FAR
34"	40 3/16"	42 3/8"	2"	1/8"	7 1/2"	15"	24"	CIX3Z-34FAR
36"	42 3/16"	44 3/8"	2"	1/8"	7 1/2"	15"	24"	CIX3Z-36FAR

SINGLE-WALL

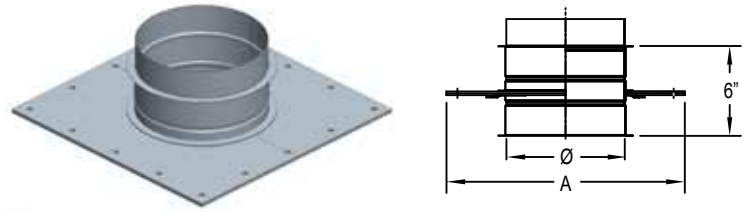
Ø	A	B	C	D	E	F	G	PRODUCT CODE
5"	5 1/16"	6 5/16"	1"	1/8"	30"	60"	6"	SCL5FAR
6"	6 3/32"	7 5/16"	1 1/4"	1/8"	30"	60"	6"	SCL6FAR
7"	7 1/8"	8 1/2"	1 1/4"	1/8"	30"	60"	6"	SCL7FAR
8"	8 1/8"	9 1/2"	1 1/4"	1/8"	30"	60"	6"	SCL8FAR
9"	9 1/8"	10 5/8"	1 1/4"	1/8"	30"	60"	6"	SCL9FAR
10"	10 1/8"	11 1/2"	1 1/4"	1/8"	30"	60"	6"	SCL10FAR
11"	11 1/8"	12 3/4"	1 1/4"	1/8"	30"	60"	6"	SCL11FAR
12"	12 3/16"	13 13/16"	1 1/2"	1/8"	22 1/2"	45"	8"	SCL12FAR
13"	13 3/16"	15"	1 1/2"	1/8"	22 1/2"	45"	8"	SCL13FAR
14"	14 3/16"	16"	1 1/2"	1/8"	22 1/2"	45"	8"	SCL14FAR
16"	16 3/16"	18"	1 1/2"	1/8"	22 1/2"	45"	8"	SCL16FAR
18"	18 3/16"	19 3/4"	1 1/2"	1/8"	22 1/2"	45"	8"	SCL18FAR
20"	20 3/16"	21 3/4"	1 1/2"	1/8"	15"	30"	12"	SCL20FAR
22"	22 3/16"	23 3/4"	1 1/2"	1/8"	15"	30"	12"	SCL22FAR
24"	24 3/16"	25 3/4"	1 1/2"	1/8"	15"	30"	12"	SCL24FAR
26"	26 3/16"	28 3/8"	2"	1/8"	11 1/4"	22 1/2"	16"	SCL26FAR
28"	28 3/16"	30 3/8"	2"	1/8"	11 1/4"	22 1/2"	16"	SCL28FAR
30"	30 3/16"	32 3/8"	2"	1/8"	11 1/4"	22 1/2"	16"	SCL30FAR
32"	32 3/16"	34 3/8"	2"	1/8"	11 1/4"	22 1/2"	16"	SCL32FAR
34"	34 3/16"	36 3/8"	2"	1/8"	11 1/4"	22 1/2"	16"	SCL34FAR
36"	36 3/16"	38 3/8"	2"	1/8"	11 1/4"	22 1/2"	16"	SCL36FAR

Materials available: SS 439.

Supports

Length Anchor Plate

Used for supporting the duct in vertical or horizontal runs and to provide a fixed point for thermal expansion consideration. Must not be in contact with combustible. The square opening of the frame must be a minimum of O.D. + 1/2" or a maximum of O.D. + 2 1/4". Included with CIX3Z: One Locking Inner "V" Band (BSI) and one Centering Flue Extension (PR-C0794) and one Locking Outer Band (BSE). Included with SCL: One Locking Inner "V" Band (BSI) and one Centering Flue Extension (PR-C0794). Hardware for connection to structure are not included (by others).



Ø	EFFECTIVE LENGTH	A	PRODUCT CODE	A	PRODUCT CODE
5"	6"	15"	CIX3Z-5APL	11"	SCL5APL
6"	6"	16"	CIX3Z-6APL	12"	SCL6APL
7"	6"	17"	CIX3Z-7APL	13"	SCL7APL
8"	6"	18"	CIX3Z-8APL	14"	SCL8APL
9"	6"	19"	CIX3Z-9APL	15"	SCL9APL
10"	6"	20"	CIX3Z-10APL	16"	SCL10APL
11"	6"	21"	CIX3Z-11APL	17"	SCL11APL
12"	6"	22"	CIX3Z-12APL	18"	SCL12APL
13"	6"	23"	CIX3Z-13APL	19"	SCL13APL
14"	6"	24"	CIX3Z-14APL	20"	SCL14APL
16"	6"	26"	CIX3Z-16APL	22"	SCL16APL
18"	6"	28"	CIX3Z-18APL	24"	SCL18APL
20"	6"	30"	CIX3Z-20APL	26"	SCL20APL
22"	6"	32"	CIX3Z-22APL	28"	SCL22APL
24"	6"	34"	CIX3Z-24APL	30"	SCL24APL
26"	6"	36"	CIX3Z-26APL	32"	SCL26APL
28"	6"	38"	CIX3Z-28APL	34"	SCL28APL
30"	6"	40"	CIX3Z-30APL	36"	SCL30APL
32"	6"	42"	CIX3Z-32APL	38"	SCL32APL
34"	6"	44"	CIX3Z-34APL	40"	SCL34APL
36"	6"	46"	CIX3Z-36APL	42"	SCL36APL

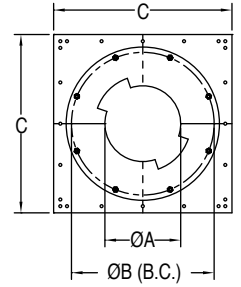
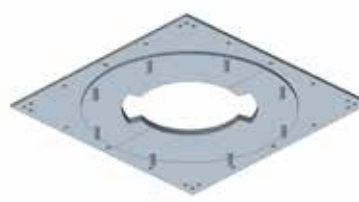
Materials available: - Inner wall: 316, 304.
 - Plates : Galvanized

Flow resistance: $K = .015 / \text{Ø [in]}$.

Supports

Anchor Plate

Used for supporting the duct in vertical or horizontal runs and to provide a fixed point for thermal expansion consideration. Must not be in contact with combustible. The square opening of the frame must be a minimum of O.D. + 3/4" or a maximum of O.D. + 3 1/4". Included with CIX3Z and SCL: Four (4) Split Square plates, four (4) clamps ring and hardware included. Hardware for connection to structure are not included (by others).



ZERO CLEARANCE 3" INSULATED

SINGLE-WALL

Ø	A	B	C	PRODUCT CODE	Ø	A	B	C	PRODUCT CODE
5"	5 1/2"	12 3/4"	17"	CIX3Z-5AP	5"	5 1/2"	8 1/2"	13"	SCL5AP
6"	6 1/2"	13 13/16"	18"	CIX3Z-6AP	6"	6 1/2"	9 1/2"	14"	SCL6AP
7"	7 1/2"	15"	19"	CIX3Z-7AP	7"	7 1/2"	10 5/8"	15"	SCL7AP
8"	8 1/2"	16"	20"	CIX3Z-8AP	8"	8 1/2"	11 1/2"	16"	SCL8AP
9"	9 1/2"	17"	21"	CIX3Z-9AP	9"	9 1/2"	12 3/4"	17"	SCL9AP
10"	10 1/2"	18"	22"	CIX3Z-10AP	10"	10 1/2"	13 13/16"	18"	SCL10AP
11"	11 1/2"	19"	23"	CIX3Z-11AP	11"	11 1/2"	15"	19"	SCL11AP
12"	12 1/2"	19 3/4"	24"	CIX3Z-12AP	12"	12 1/2"	16"	20"	SCL12AP
13"	13 1/2"	20 3/4"	25"	CIX3Z-13AP	13"	13 1/2"	17"	21"	SCL13AP
14"	14 1/2"	21 3/4"	26"	CIX3Z-14AP	14"	14 1/2"	18"	22"	SCL14AP
16"	16 1/2"	23 3/4"	28"	CIX3Z-16AP	16"	16 1/2"	19 3/4"	24"	SCL16AP
18"	18 1/2"	25 3/4"	30"	CIX3Z-18AP	18"	18 1/2"	21 3/4"	26"	SCL18AP
20"	20 1/2"	28 3/8"	32"	CIX3Z-20AP	20"	20 1/2"	23 3/4"	28"	SCL20AP
22"	22 1/2"	30 3/8"	34"	CIX3Z-22AP	22"	22 1/2"	25 3/4"	30"	SCL22AP
24"	24 1/2"	32 3/8"	36"	CIX3Z-24AP	24"	24 1/2"	28 3/8"	32"	SCL24AP
26"	26 1/2"	34 3/8"	38"	CIX3Z-26AP	26"	26 1/2"	30 3/8"	34"	SCL26AP
28"	28 1/2"	36 3/8"	40"	CIX3Z-28AP	28"	28 1/2"	32 3/8"	36"	SCL28AP
30"	30 1/2"	38 3/8"	42"	CIX3Z-30AP	30"	30 1/2"	34 3/8"	38"	SCL30AP
32"	32 1/2"	40 3/8"	44"	CIX3Z-32AP	32"	32 1/2"	36 3/8"	40"	SCL32AP
34"	34 1/2"	42 3/8"	46"	CIX3Z-34AP	34"	34 1/2"	38 3/8"	42"	SCL34AP
36"	36 1/2"	44 3/8"	48"	CIX3Z-36AP	36"	36 1/2"	40 3/8"	44"	SCL36AP

Materials available: Galvanized.

Supports

Wall Support Heavy Duty

Used for supporting the vent in vertical runs and to provide a fixed point for thermal expansion consideration. It can maintain a clearance to the wall from 2 1/2" to 10" by adjusting the extendible braces. See instruction manual for required specifications. Included with CIX3Z and SCL: One (1) FAR, two (2) struts, two (2) adjustable struts, two (2) small wall brackets, two (2) brackets and hardware included. Hardware for connection to structure/wall are not included (by others).

(Continued on next page)

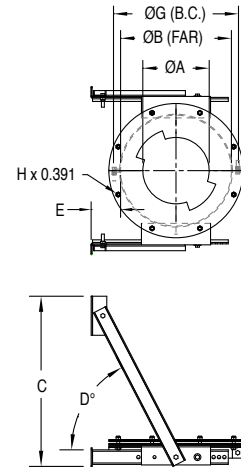
ZERO CLEARANCE 3" INSULATED

Ø	ØA (CLAMP)	ØB (INSIDE FAR DIA.)	C (HEIGHT)		D°		E		ØG (B.C.)	H (#HOLES)	PRODUCT CODE
			MIN	MAX	MIN	MAX	MIN	MAX			
5"	5 1/2"	11 1/8"	20"	23 1/8"	40°	70°	2"	10"	12 3/4"	3	CIX3Z-5WSHD
6"	6 1/2"	12 3/16"	20 1/2"	23 5/8"	40°	70°	2"	10"	13 13/16"	4	CIX3Z-6WSHD
7"	7 1/2"	13 3/16"	21"	24 1/8"	40°	69°	2"	10"	15"	4	CIX3Z-7WSHD
8"	8 1/2"	14 3/16"	21 1/2"	24 1/8"	40°	68°	2"	10"	16"	4	CIX3Z-8WSHD
9"	9 1/2"	15 3/16"	22"	25 1/4"	40°	67°	2"	10"	17"	4	CIX3Z-9WSHD
10"	10 1/2"	16 3/16"	23 1/4"	26 1/2"	40°	66°	2"	10"	18"	4	CIX3Z-10WSHD
11"	11 1/2"	17 3/16"	23 3/4"	26 1/2"	40°	66°	2"	10"	19"	4	CIX3Z-11WSHD
12"	12 1/2"	18 3/16"	24 1/4"	27 5/8"	40°	65°	2"	10"	19 3/4"	4	CIX3Z-12WSHD
13"	13 1/2"	19 3/16"	24"	27 1/4"	40°	65°	2"	10"	20 3/4"	6	CIX3Z-13WSHD
14"	14 1/2"	20 3/16"	24 1/2"	27 5/8"	40°	64°	2"	10"	21 3/4"	6	CIX3Z-14WSHD
16"	16 1/2"	22 3/16"	25 1/2"	28 1/2"	40°	63°	2"	10"	23 3/4"	6	CIX3Z-16WSHD
18"	18 1/2"	24 3/16"	26 1/2"	29 1/2"	40°	62°	2"	10"	25 3/4"	6	CIX3Z-18WSHD
20"	20 1/2"	26 3/16"	27 1/2"	30"	40°	60°	2 1/2"	10"	28 3/8"	8	CIX3Z-20WSHD
22"	22 1/2"	28 3/16"	28 1/2"	31"	40°	59°	2 1/2"	10"	30 3/8"	8	CIX3Z-22WSHD
24"	24 1/2"	30 3/16"	29 1/2"	32"	40°	58°	2 1/2"	10"	32 3/8"	8	CIX3Z-24WSHD
26"	26 1/2"	32 3/16"	30 1/2"	33"	40°	58°	2 1/2"	10"	34 3/8"	8	CIX3Z-26WSHD
28"	28 1/2"	34 3/16"	32 1/4"	34 1/2"	40°	57°	2 1/2"	10"	36 3/8"	8	CIX3Z-28WSHD
30"	30 1/2"	36 3/16"	33 1/4"	35 3/8"	40°	56°	2 1/2"	10"	38 3/8"	8	CIX3Z-30WSHD
32"	32 1/2"	38 3/16"	33 1/2"	35 5/8"	40°	56°	2 1/2"	10"	40 3/8"	12	CIX3Z-32WSHD
34"	34 1/2"	40 3/16"	34 1/2"	36 1/2"	40°	55°	2 1/2"	10"	42 3/8"	12	CIX3Z-34WSHD
36"	36 1/2"	42 3/16"	35 1/2"	37 1/2"	40°	55°	2 1/2"	10"	44 3/8"	12	CIX3Z-36WSHD

Materials available: Galvanized.

Supports

Wall Support Heavy Duty (cont)



SINGLE-WALL

Ø	ØA (CLAMP)	ØB (INSIDE FAR DIA.)	C (HEIGHT)		D°		E		ØG (B.C.)	H (#HOLES)	PRODUCT CODE
			MIN	MAX	MIN	MAX	MIN	MAX			
5"	5 1/2"	7 1/8"	13 3/8"	18 11/16"	40°	75°	2"	10"	8 1/2"	3	SCL5WSHD
6"	6 1/2"	8 1/8"	13 3/4"	19 3/16"	40°	74°	2"	10"	9 1/2"	3	SCL6WSHD
7"	7 1/2"	9 1/8"	14 1/8"	19 11/16"	40°	72°	2"	10"	10 5/8"	3	SCL7WSHD
8"	8 1/2"	10 1/8"	14 11/16"	20 5/16"	40°	71°	2"	10"	11 1/2"	3	SCL8WSHD
9"	9 1/2"	11 1/8"	15 1/16"	20 13/16"	40°	70°	2"	10"	12 3/4"	3	SCL9WSHD
10"	10 1/2"	12 3/16"	15 7/16"	21 5/16"	40°	70°	2"	10"	13 13/16"	4	SCL10WSHD
11"	11 1/2"	13 3/16"	15 7/8"	21 3/4"	40°	69°	2"	10"	15"	4	SCL11WSHD
12"	12 1/2"	14 3/16"	16 7/16"	22 3/8"	40°	68°	2"	10"	16"	4	SCL12WSHD
13"	13 1/2"	16 3/16"	16 13/16"	22 7/8"	40°	67°	2"	10"	17"	4	SCL13WSHD
14"	14 1/2"	18 3/16"	17 3/16"	23 5/16"	40°	66°	2"	10"	18"	4	SCL14WSHD
16"	16 1/2"	20 3/16"	17 15/16"	24 1/4"	40°	65°	2"	10"	19 3/4"	4	SCL16WSHD
18"	18 1/2"	22 3/16"	18 7/8"	25 1/4"	40°	64°	2"	10"	21 3/4"	6	SCL18WSHD
20"	20 1/2"	24 3/16"	19 5/8"	26 3/16"	40°	63°	2 1/2"	10"	23 3/4"	6	SCL20WSHD
22"	22 1/2"	26 3/16"	20 9/16"	27 3/16"	40°	62°	2 1/2"	10"	25 3/4"	6	SCL22WSHD
24"	24 1/2"	28 3/16"	21 5/16"	27 13/16"	40°	60°	2 1/2"	10"	28 3/8"	8	SCL24WSHD
26"	26 1/2"	30 3/16"	22 1/4"	28 13/16"	40°	59°	2 1/2"	10"	30 3/8"	8	SCL26WSHD
28"	28 1/2"	32 3/16"	23"	29 5/8"	40°	58°	2 1/2"	10"	32 3/8"	8	SCL28WSHD
30"	30 1/2"	34 3/16"	24"	30 5/8"	40°	58°	2 1/2"	10"	34 3/8"	8	SCL30WSHD
32"	32 1/2"	36 3/16"	24 3/4"	31 1/2"	40°	57°	2 1/2"	10"	36 3/8"	8	SCL32WSHD
34"	34 1/2"	34 3/16"	25 1/2"	32 5/16"	40°	56°	2 1/2"	10"	38 3/8"	8	SCL34WSHD
36"	36 1/2"	36 3/16"	26 7/16"	33 5/16"	40°	56°	2 1/2"	10"	40 3/8"	12	SCL36WSHD

Materials available: Galvanized.

Supports

Wall Guide Heavy Duty

Used for guiding in vertical installation attached to the wall. It can maintain a clearance to the outer wall from 2 1/2" to 10" by adjusting the braces. See instruction manual for required specifications. Included with CIX3Z and SCL: One (1) FAR, four (4) struts, two (2) small wall brackets, two (2) big wall brackets, two (2) brackets and hardware included. Hardware for connection to structure/wall are not included (by others).

(Continued on next page)

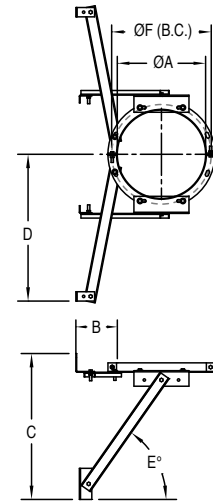
ZERO CLEARANCE 3" INSULATED

Ø	ØA (CLAMP)	B CLEARANCE FROM THE WALL TO THE OUTER WALL OF CIX3Z		C		D		E°		F (B.C.)	PRODUCT CODE
		MIN	MAX	MIN	MAX	MIN	MAX	MIN	MAX		
5"	11 1/8"	1 3/4"	10"	18 9/16"	24 3/16"	12 9/16"	18 3/16"	40°	72°	12 3/4"	CIX3Z-5WGHD
6"	12 3/16"	2"	10"	18 15/16"	24 9/16"	15 5/8"	21 1/4"	40°	70°	13 13/16"	CIX3Z-6WGHD
7"	13 3/16"	2"	10"	19 5/16"	25 1/16"	16 3/16"	21 15/16"	40°	69°	15"	CIX3Z-7WGHD
8"	14 3/16"	2"	10"	19 7/8"	25 11/16"	16 15/16"	22 3/4"	40°	68°	16"	CIX3Z-8WGHD
9"	15 3/16"	2"	10"	20 1/4"	26 1/8"	17 1/2"	23 3/8"	40°	67°	17"	CIX3Z-9WGHD
10"	16 3/16"	2"	10"	20 5/8"	26 5/8"	18 1/16"	24 1/16"	40°	67°	18"	CIX3Z-10WGHD
11"	17 3/16"	2"	10"	21"	27 1/16"	18 5/8"	24 11/16"	40°	66°	19"	CIX3Z-11WGHD
12"	18 3/16"	2"	10"	21 7/16"	27 1/2"	19 3/16"	25 5/16"	40°	65°	19 3/4"	CIX3Z-12WGHD
13"	19 3/16"	2"	10"	22"	28 1/8"	18 11/16"	24 13/16"	40°	65°	20 3/4"	CIX3Z-13WGHD
14"	20 3/16"	2"	10"	22 3/8"	28 9/16"	19 3/16"	25 3/8"	40°	64°	21 3/4"	CIX3Z-14WGHD
16"	22 3/16"	2"	10"	23 1/8"	29 1/2"	20 3/16"	26 9/16"	40°	63°	23 3/4"	CIX3Z-16WGHD
18"	24 3/16"	2"	10"	24 1/16"	30 1/2"	21 3/8"	27 7/8"	40°	62°	25 3/4"	CIX3Z-18WGHD
20"	26 3/16"	2 1/2"	10"	24 13/16"	31 1/8"	21 9/16"	27 7/8"	40°	60°	28 3/8"	CIX3Z-20WGHD
22"	28 3/16"	2 1/2"	10"	25 3/4"	32 1/8"	22 3/4"	29 1/16"	40°	59°	30 3/8"	CIX3Z-22WGHD
24"	30 3/16"	2 1/2"	10"	26 1/2"	33"	23 11/16"	30 1/8"	40°	59°	32 3/8"	CIX3Z-24WGHD
26"	32 3/16"	2 1/2"	10"	27 7/16"	34"	24 13/16"	31 5/16"	40°	58°	34 3/8"	CIX3Z-26WGHD
28"	34 3/16"	2 1/2"	10"	28 3/16"	34 13/16"	25 3/4"	32 3/8"	40°	57°	36 3/8"	CIX3Z-28WGHD
30"	36 3/16"	2 1/2"	10"	28 15/16"	35 5/8"	26 11/16"	33 3/8"	40°	57°	38 3/8"	CIX3Z-30WGHD
32"	38 3/16"	2 1/2"	10"	29 15/16"	36 5/8"	26 9/16"	33 1/4"	40°	56°	40 3/8"	CIX3Z-32WGHD
34"	40 3/16"	2 1/2"	10"	30 11/16"	37 1/2"	27 7/16"	33 1/4"	40°	56°	42 3/8"	CIX3Z-34WGHD
36"	42 3/16"	2 1/2"	10"	31 5/8"	38 7/16"	28 1/2"	35 3/8"	40°	55°	44 3/8"	CIX3Z-36WGHD

Materials available: Galvalume.

Supports

Wall Guide Heavy Duty (cont)



SINGLE-WALL

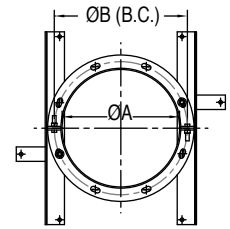
Ø	ØA (CLAMP)	B CLEARANCE FROM THE WALL TO THE OUTER WALL OF SCL		C		D		E°		F (B.C.)	PRODUCT CODE
		MIN	MAX	MIN	MAX	MIN	MAX	MIN	MAX		
5"	5 1/16"	1 3/4"	10"	16 7/8"	22 1/16"	10 7/8"	16 1/16"	40°	76°	6 5/16"	SCL5WGHD
6"	6 3/32"	1 3/4"	10"	17 1/4"	22 9/16"	11 1/4"	16 9/16"	40°	75°	7 5/16"	SCL6WGHD
7"	7 1/8"	1 3/4"	10"	17 5/8"	23 1/16"	11 5/8"	17 1/16"	40°	74°	8 1/2"	SCL7WGHD
8"	8 1/8"	1 3/4"	10"	18 3/16"	23 11/16"	12 3/16"	17 11/16"	40°	73°	9 1/2"	SCL8WGHD
9"	9 1/8"	1 3/4"	10"	18 9/16"	24 3/16"	12 9/16"	18 3/16"	40°	72°	10 5/8"	SCL9WGHD
10"	10 1/8"	2"	10"	18 15/16"	24 9/16"	15 5/8"	21 1/4"	40°	70°	11 1/2"	SCL10WGHD
11"	11 1/8"	2"	10"	19 5/16"	25 1/16"	16 3/16"	21 15/16"	40°	69°	12 3/4"	SCL11WGHD
12"	12 3/16"	2"	10"	19 7/8"	25 11/16"	16 15/16"	22 3/4"	40°	68°	13 13/16"	SCL12WGHD
13"	13 3/16"	2"	10"	20 1/4"	26 1/8"	17 1/2"	23 3/8"	40°	67°	15"	SCL13WGHD
14"	14 3/16"	2"	10"	20 5/8"	26 5/8"	18 1/16"	24 1/16"	40°	67°	16"	SCL14WGHD
16"	16 3/16"	2"	10"	21 7/16"	27 1/2"	19 3/16"	25 5/16"	40°	65°	18"	SCL16WGHD
18"	18 3/16"	2"	10"	22 3/8"	28 9/16"	19 3/16"	25 3/8"	40°	64°	19 3/4"	SCL18WGHD
20"	20 3/16"	2"	10"	23 1/8"	29 1/2"	20 3/16"	26 9/16"	40°	63°	21 3/4"	SCL20WGHD
22"	22 3/16"	2"	10"	24 1/16"	30 1/2"	21 3/8"	27 7/8"	40°	62°	23 3/4"	SCL22WGHD
24"	24 3/16"	2 1/2"	10"	24 13/16"	31 3/8"	21 9/16"	27 7/8"	40°	60°	25 3/4"	SCL24WGHD
26"	26 3/16"	2 1/2"	10"	25 3/4"	32 1/8"	22 3/4"	29 1/16"	40°	59°	28 3/8"	SCL26WGHD
28"	28 3/16"	2 1/2"	10"	26 1/2"	33"	23 11/16"	30 1/8"	40°	59°	30 3/8"	SCL28WGHD
30"	30 3/16"	2 1/2"	10"	27 7/16"	34"	24 13/16"	31 5/16"	40°	58°	32 3/8"	SCL30WGHD
32"	32 3/16"	2 1/2"	10"	28 3/16"	34 13/16"	25 3/4"	32 3/8"	40°	57°	34 3/8"	SCL32WGHD
34"	34 3/16"	2 1/2"	10"	28 15/16"	35 5/8"	26 11/16"	33 3/8"	40°	57°	36 3/8"	SCL34WGHD
36"	36 3/16"	2 1/2"	10"	29 15/16"	36 5/8"	26 9/16"	33 1/4"	40°	56°	38 3/8"	SCL36WGHD

Materials available: Galvalume.

Supports

Floor Guide Heavy Duty

Used for guiding in vertical installation when passing through a floor or roof. Maximum square opening dimensions is duct I.D. + 14". Must not be in contact with combustibles. Included with CIX3Z and SCL: One (1) FAR, Two (2) struts, two (2) straps and hardware included. Hardware for connection to structure/wall are not included (by others).



ZERO CLEARANCE 3" INSULATED

SINGLE-WALL

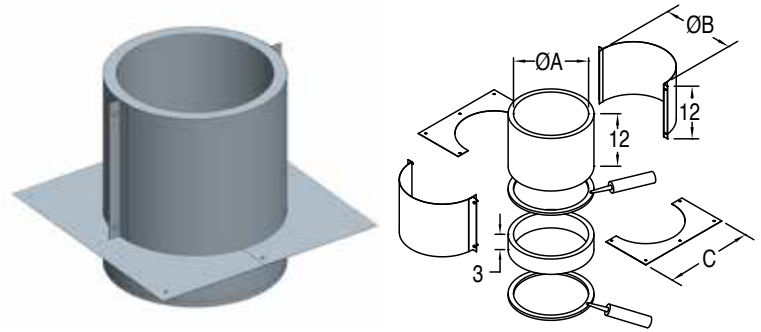
Ø	ØA - I.D. OF FAR	B - B.C.	PRODUCT CODE	Ø	ØA - I.D. OF FAR	B - B.C.	PRODUCT CODE
5"	11 1/8"	12 3/4"	CIX3Z-5FGHD	5"	5 1/16"	6 5/16"	SCL5FGHD
6"	12 3/16"	13 13/16"	CIX3Z-6FGHD	6"	6 3/32"	7 5/16"	SCL6FGHD
7"	13 3/16"	15"	CIX3Z-7FGHD	7"	7 1/8"	8 1/2"	SCL7FGHD
8"	14 3/16"	16"	CIX3Z-8FGHD	8"	8 1/8"	9 1/2"	SCL8FGHD
9"	15 3/16"	17"	CIX3Z-9FGHD	9"	9 1/8"	10 5/8"	SCL9FGHD
10"	16 3/16"	18"	CIX3Z-10FGHD	10"	10 1/8"	11 1/2"	SCL10FGHD
11"	17 3/16"	19"	CIX3Z-11FGHD	11"	11 1/8"	12 3/4"	SCL11FGHD
12"	18 3/16"	19 3/4"	CIX3Z-12FGHD	12"	12 3/16"	13 13/16"	SCL12FGHD
13"	19 3/16"	20 3/4"	CIX3Z-13FGHD	13"	13 3/16"	15"	SCL13FGHD
14"	20 3/16"	21 3/4"	CIX3Z-14FGHD	14"	14 3/16"	16"	SCL14FGHD
16"	22 3/16"	23 3/4"	CIX3Z-16FGHD	16"	16 3/16"	18"	SCL16FGHD
18"	24 3/16"	25 3/4"	CIX3Z-18FGHD	18"	18 3/16"	19 3/4"	SCL18FGHD
20"	26 3/16"	28 3/8"	CIX3Z-20FGHD	20"	20 3/16"	21 3/4"	SCL20FGHD
22"	28 3/16"	30 3/8"	CIX3Z-22FGHD	22"	22 3/16"	23 3/4"	SCL22FGHD
24"	30 3/16"	32 3/8"	CIX3Z-24FGHD	24"	24 3/16"	25 3/4"	SCL24FGHD
26"	32 3/16"	34 3/8"	CIX3Z-26FGHD	26"	26 3/16"	28 3/8"	SCL26FGHD
28"	34 3/16"	36 3/8"	CIX3Z-28FGHD	28"	28 3/16"	30 3/8"	SCL28FGHD
30"	36 3/16"	38 3/8"	CIX3Z-30FGHD	30"	30 3/16"	32 3/8"	SCL30FGHD
32"	38 3/16"	40 3/8"	CIX3Z-32FGHD	32"	32 3/16"	34 3/8"	SCL32FGHD
34"	40 3/16"	42 3/8"	CIX3Z-34FGHD	34"	34 3/16"	36 3/8"	SCL34FGHD
36"	42 3/16"	44 3/8"	CIX3Z-36FGHD	36"	36 3/16"	38 3/8"	SCL36FGHD

Materials available: Galvanized.

Through Penetration Firestop

Through Penetration Firestop Kit

Used to maintain fire resistance rating of a floor or a wall when the grease duct CIX3Z is penetrating a 2-hour fire-rated floor or wall (UL System No. C-AJ-7160). One kit required for a floor penetration and two kits required for wall penetrations. Diameter of penetration is outer casing + 2" ($\text{Ø I.D.} + 8"$). Must use the firestop caulking. Reference installation instructions. Included with CIX3Z only: Two (2) split closure band, two (2) split cover plate, one (1) 12" wide insulation strip, one (1) 3" wide insulation strip and Hardware included except the connection to the wall/floor (by others).



ZERO CLEARANCE 3" INSULATED

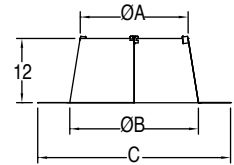
Ø	ØA	ØB - I.D.	C	HEIGHT	PRODUCT CODE
5"	11"	13"	17"		CIX3Z-5TPFK
6"	12"	14"	18"		CIX3Z-6TPFK
7"	13"	15"	19"		CIX3Z-7TPFK
8"	14"	16"	20"		CIX3Z-8TPFK
9"	15"	17"	21"		CIX3Z-9TPFK
10"	16"	18"	22"		CIX3Z-10TPFK
11"	17"	19"	23"		CIX3Z-11TPFK
12"	18"	20"	24"		CIX3Z-12TPFK
13"	19"	21"	25"		CIX3Z-13TPFK
14"	20"	22"	26"	→ 12" above floor or beyond wall	CIX3Z-14TPFK
16"	22"	24"	28"		CIX3Z-16TPFK
18"	24"	26"	30"	→ 4 1/2" within floor or wall	CIX3Z-18TPFK
20"	26"	28"	32"		CIX3Z-20TPFK
22"	28"	30"	34"		CIX3Z-22TPFK
24"	30"	32"	36"		CIX3Z-24TPFK
26"	32"	34"	38"		CIX3Z-26TPFK
28"	34"	36"	40"		CIX3Z-28TPFK
30"	36"	38"	42"		CIX3Z-30TPFK
32"	38"	40"	44"		CIX3Z-32TPFK
34"	40"	42"	46"		CIX3Z-34TPFK
36"	42"	44"	48"		CIX3Z-36TPFK

Materials available: Galvalume.

Flashings

Flashing

Used in conjunction with storm collar for weatherization at the roof. Included with CIX3Z and SCL: One (1) Flashing, one (1) Storm Collar (SC) and hardware.



ZERO CLEARANCE 3" INSULATED

Ø	A	B	C	EFFECTIVE HEIGHT	PRODUCT CODE
5"	13 3/16"	17 5/8"	30"	12"	CIX3Z-5F
6"	14 3/16"	17 5/8"	30"	12"	CIX3Z-6F
7"	15 3/16"	20"	31"	12"	CIX3Z-7F
8"	16 3/16"	20"	31"	12"	CIX3Z-8F
9"	17 3/16"	22 1/8"	34"	12"	CIX3Z-9F
10"	18 3/16"	22 1/8"	34"	12"	CIX3Z-10F
11"	19 3/16"	24 1/8"	36"	12"	CIX3Z-11F
12"	20 3/16"	24 1/8"	36"	12"	CIX3Z-12F
13"	21 3/16"	26 1/8"	38"	12"	CIX3Z-13F
14"	22 3/16"	26 1/8"	38"	12"	CIX3Z-14F
16"	24 3/16"	28 1/8"	40"	12"	CIX3Z-16F
18"	26 3/16"	30 1/8"	42"	12"	CIX3Z-18F
20"	28 3/16"	32 1/8"	44"	12"	CIX3Z-20F
22"	30 3/16"	34 1/8"	46"	12"	CIX3Z-22F
24"	32 3/16"	36 1/8"	48"	12"	CIX3Z-24F
26"	34 3/16"	38 1/8"	50"	12"	CIX3Z-26F
28"	36 3/16"	40 1/8"	52"	12"	CIX3Z-28F
30"	38 3/16"	42 1/8"	54"	12"	CIX3Z-30F
32"	40 3/16"	44 1/8"	56"	12"	CIX3Z-32F
34"	42 3/16"	46 1/8"	58"	12"	CIX3Z-34F
36"	44 3/16"	48 3/8"	60"	12"	CIX3Z-36F

SINGLE-WALL

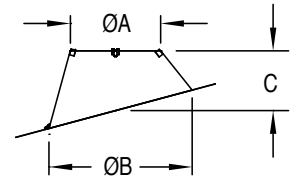
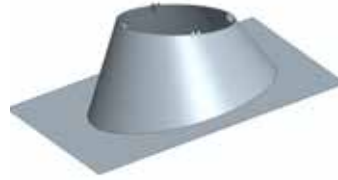
Ø	A	B	C	EFFECTIVE HEIGHT	PRODUCT CODE
5"	7 3/16"	11 3/16"	16"	12"	SCL5F
6"	8 3/16"	11 3/16"	16"	12"	SCL6F
7"	9 3/16"	14"	26"	12"	SCL7F
8"	10 3/16"	14"	26"	12"	SCL8F
9"	11 3/16"	14"	26"	12"	SCL9F
10"	12 3/16"	16 1/8"	28"	12"	SCL10F
11"	13 3/16"	17 5/8"	30"	12"	SCL11F
12"	14 3/16"	17 5/8"	30"	12"	SCL12F
13"	15 3/16"	20"	31"	12"	SCL13F
14"	16 3/16"	20"	31"	12"	SCL14F
16"	18 3/16"	22 1/8"	34"	12"	SCL16F
18"	20 3/16"	24 1/8"	36"	12"	SCL18F
20"	22 3/16"	26 1/8"	38"	12"	SCL20F
22"	24 3/16"	28 1/8"	40"	12"	SCL22F
24"	26 3/16"	30 1/8"	42"	12"	SCL24F
26"	28 3/16"	32 1/8"	44"	12"	SCL26F
28"	30 3/16"	38 1/8"	46"	12"	SCL28F
30"	32 3/16"	40 1/8"	48"	12"	SCL30F
32"	34 3/16"	42 1/8"	50"	12"	SCL32F
34"	36 3/16"	44 1/8"	52"	12"	SCL34F
36"	38 3/16"	46 1/8"	54"	12"	SCL36F

Materials available: 304, Galvalume.

Flashings

Adjustable Flashing

Used in conjunction with storm collar for weatherization at the roof. 5° to 30° pitch. Included with CIX3Z and SCL: one (1) Storm Collar (SC).



ZERO CLEARANCE 3" INSULATED

Ø	A	B	C - EFFECTIVE HEIGHT	PRODUCT CODE
5"	13 21/32"	25 17/32"	12 17/32"	CIX3Z-5F30
6"	14 11/16"	26 17/32"	12 7/16"	CIX3Z-6F30
7"	15 23/32"	27 5/8"	12 7/16"	CIX3Z-7F30
8"	16 3/4"	28 11/16"	12 7/16"	CIX3Z-8F30
9"	17 25/32"	29 25/32"	12 7/16"	CIX3Z-9F30
10"	18 27/32"	30 37/32"	12 7/16"	CIX3Z-10F30
11"	19 7/8"	31 15/16"	12 7/16"	CIX3Z-11F30
12"	20 29/32"	33"	12 7/16"	CIX3Z-12F30
13"	21 15/16"	34 3/32"	12 7/16"	CIX3Z-13F30
14"	22 31/32"	35 5/32"	12 7/16"	CIX3Z-14F30
16"	25 1/32"	37 9/32"	12 7/16"	CIX3Z-16F30
18"	27 1/8"	39 7/16"	12 7/16"	CIX3Z-18F30
20"	29 3/16"	41 19/32"	12 7/16"	CIX3Z-20F30
22"	31 1/4"	43 3/4"	12 7/16"	CIX3Z-22F30
24"	33 5/16"	45 29/32"	12 7/16"	CIX3Z-24F30
26"	35 13/32"	48 11/32"	12 15/16"	CIX3Z-26F30
28"	37 17/32"	50 13/16"	13 15/32"	CIX3Z-28F30
30"	39 17/32"	53 31/32"	13 15/32"	CIX3Z-30F30
32"	41 19/32"	55 13/32"	13 31/32"	CIX3Z-32F30
34"	43 11/16"	57 9/16"	13 31/32"	CIX3Z-34F30
36"	45 3/4"	60 3/16"	13 31/32"	CIX3Z-36F30

SINGLE-WALL

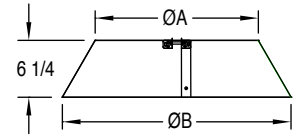
Ø	A	B	C - EFFECTIVE HEIGHT	PRODUCT CODE
5"	7 7/16"	18 5/8"	12 7/32"	SCL5F30
6"	8 15/32"	19 25/32"	12 7/32"	SCL6F30
7"	9 1/2"	20 15/16"	12 7/32"	SCL7F30
8"	10 9/16"	22 3/32"	12 5/16"	SCL8F30
9"	11 19/32"	23 3/8"	12 7/16"	SCL9F30
10"	12 5/8"	24 1/2"	12 7/16"	SCL10F30
11"	13 21/32"	25 17/32"	12 17/32"	SCL11F30
12"	14 11/16"	26 5/8"	12 7/16"	SCL12F30
13"	15 23/32"	27 5/8"	12 7/16"	SCL13F30
14"	16 3/4"	28 7/8"	12 7/16"	SCL14F30
16"	18 27/32"	31"	12 7/16"	SCL16F30
18"	20 29/32"	33 1/8"	12 7/16"	SCL18F30
20"	22 31/32"	35 1/4"	12 7/16"	SCL20F30
22"	25 1/32"	37 3/8"	12 7/16"	SCL22F30
24"	27 1/8"	39 1/2"	12 7/16"	SCL24F30
26"	29 3/16"	41 5/8"	12 7/16"	SCL26F30
28"	31 1/4"	43 3/4"	12 7/16"	SCL28F30
30"	33 5/16"	45 29/32"	12 7/16"	SCL30F30
32"	35 13/32"	48 11/32"	12 15/16"	SCL32F30
34"	37 15/32"	50 13/16"	13 15/32"	SCL34F30
36"	39 17/32"	53 31/32"	13 15/32"	SCL36F30

Materials available: 304, Galvalume.

Flashings

Storm Collar

Used above the Flashing or the Adjustable Flashing for complete weatherization above the roof. To be sealed with outer joint sealant (not included). Included with CIX3Z and SCL: Hardware for the collar.



ZERO CLEARANCE 3" INSULATED

Ø	A	B	C - EFFECTIVE HEIGHT	PRODUCT CODE
5"	10 15/16"	18 3/16"	6 1/4"	CIX3Z-5SC
6"	11 15/16"	19 3/16"	6 1/4"	CIX3Z-6SC
7"	12 15/16"	20 3/16"	6 1/4"	CIX3Z-7SC
8"	13 15/16"	21 3/16"	6 1/4"	CIX3Z-8SC
9"	14 15/16"	22 3/16"	6 1/4"	CIX3Z-9SC
10"	15 15/16"	23 3/16"	6 1/4"	CIX3Z-10SC
11"	16 15/16"	24 3/16"	6 1/4"	CIX3Z-11SC
12"	17 15/16"	25 3/16"	6 1/4"	CIX3Z-12SC
13"	18 15/16"	26 3/16"	6 1/4"	CIX3Z-13SC
14"	19 15/16"	27 3/16"	6 1/4"	CIX3Z-14SC
16"	21 15/16"	29 3/16"	6 1/4"	CIX3Z-16SC
18"	23 15/16"	31 3/16"	6 1/4"	CIX3Z-18SC
20"	25 15/16"	33 3/16"	6 1/4"	CIX3Z-20SC
22"	27 15/16"	35 3/16"	6 1/4"	CIX3Z-22SC
24"	29 15/16"	37 3/16"	6 1/4"	CIX3Z-24SC
26"	31 15/16"	39 3/16"	6 1/4"	CIX3Z-26SC
28"	33 15/16"	41 3/16"	6 1/4"	CIX3Z-28SC
30"	35 15/16"	43 3/16"	6 1/4"	CIX3Z-30SC
32"	37 15/16"	45 3/16"	6 1/4"	CIX3Z-32SC
34"	39 15/16"	47 3/16"	6 1/4"	CIX3Z-34SC
36"	41 15/16"	49 3/16"	6 1/4"	CIX3Z-36SC

SINGLE-WALL

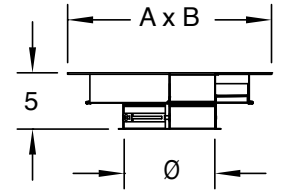
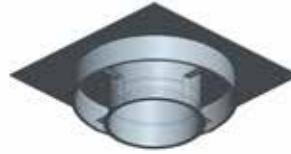
Ø	A	B	C - EFFECTIVE HEIGHT	PRODUCT CODE
5"	4 15/16"	12 3/16"	6 1/4"	SCL5SC
6"	5 15/16"	13 3/16"	6 1/4"	SCL6SC
7"	6 15/16"	14 3/16"	6 1/4"	SCL7SC
8"	7 15/16"	15 3/16"	6 1/4"	SCL8SC
9"	8 15/16"	16 3/16"	6 1/4"	SCL9SC
10"	9 15/16"	17 3/16"	6 1/4"	SCL10SC
11"	10 15/16"	18 3/16"	6 1/4"	SCL11SC
12"	11 15/16"	19 3/16"	6 1/4"	SCL12SC
13"	12 15/16"	20 3/16"	6 1/4"	SCL13SC
14"	13 15/16"	21 3/16"	6 1/4"	SCL14SC
16"	15 15/16"	23 3/16"	6 1/4"	SCL16SC
18"	17 15/16"	25 3/16"	6 1/4"	SCL18SC
20"	19 15/16"	27 3/16"	6 1/4"	SCL20SC
22"	21 15/16"	29 3/16"	6 1/4"	SCL22SC
24"	23 15/16"	31 3/16"	6 1/4"	SCL24SC
26"	25 15/16"	33 3/16"	6 1/4"	SCL26SC
28"	27 15/16"	35 3/16"	6 1/4"	SCL28SC
30"	29 15/16"	37 3/16"	6 1/4"	SCL30SC
32"	31 15/16"	39 3/16"	6 1/4"	SCL32SC
34"	33 15/16"	41 3/16"	6 1/4"	SCL34SC
36"	35 15/16"	43 3/16"	6 1/4"	SCL36SC

Materials available: 304, Galvalume.

Termination

Fan Adaptor

Used to connect to the inlet of an upblast kitchen fan. Specify plate size A x B (dimensions A x B may be varied to fit application). Hardware for connection to the Fan are not included (by others).

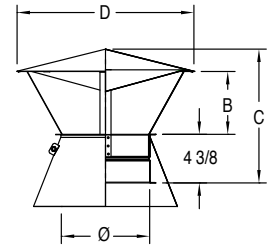


Ø	EFFECTIVE LENGTH	A	B	ZERO CLEARANCE 3" INSULATED	SINGLE-WALL
5" to 36"	5"	Custom	Custom	CIX3Z-FANAB	SCLØFAN(AB)

Materials available: - Inner all: 304, 316.
- Plate : Galvanized.

Cone Rain Cap

Used to provide the greatest degree of rain protection. Also available with bird screen (SCLCRCB). Included with CIX3Z and SCL: One (1) Duct Closure Ring (CR).



ZERO CLEARANCE 3" INSULATED

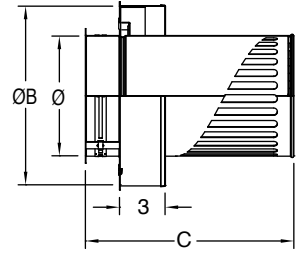
ØA	B	C - EFFECTIVE HEIGHT	D	STANDARD	WITH BIRD SCREEN	STANDARD	WITH BIRD SCREEN
5"	5 1/16"	11 1/2"	16"	CIX3Z-5CRC	CIX3Z-5CRCB	SCL5CRC	SCL5CRCB
6"	5 7/16"	11 7/8"	16"	CIX3Z-6CRC	CIX3Z-6CRCB	SCL6CRC	SCL6CRCB
7"	5 3/4"	12 1/8"	16"	CIX3Z-7CRC	CIX3Z-7CRCB	SCL7CRC	SCL7CRCB
8"	6"	12 3/8"	16"	CIX3Z-8CRC	CIX3Z-8CRCB	SCL8CRC	SCL8CRCB
9"	5"	12"	19 7/8"	CIX3Z-9CRC	CIX3Z-9CRCB	SCL9CRC	SCL9CRCB
10"	5 7/16"	12 3/8"	19 7/8"	CIX3Z-10CRC	CIX3Z-10CRCB	SCL10CRC	SCL10CRCB
11"	5 13/16"	12 3/4"	19 7/8"	CIX3Z-11CRC	CIX3Z-11CRCB	SCL11CRC	SCL11CRCB
12"	7 7/8"	14 5/8"	24"	CIX3Z-12CRC	CIX3Z-12CRCB	SCL12CRC	SCL12CRCB
13"	8 1/8"	14 7/8"	24"	CIX3Z-13CRC	CIX3Z-13CRCB	SCL13CRC	SCL13CRCB
14"	7"	16 1/2"	27 3/4"	CIX3Z-14CRC	CIX3Z-14CRCB	SCL14CRC	SCL14CRCB
16"	7 3/4"	17 1/4"	27 3/4"	CIX3Z-16CRC	CIX3Z-16CRCB	SCL16CRC	SCL16CRCB
18"	7 1/8"	17 1/4"	31 1/2"	CIX3Z-18CRC	CIX3Z-18CRCB	SCL18CRC	SCL18CRCB
20"	7 7/8"	18"	31 1/2"	CIX3Z-20CRC	CIX3Z-20CRCB	SCL20CRC	SCL20CRCB
22"	12 1/2"	25 1/8"	44"	CIX3Z-22CRC	CIX3Z-22CRCB	SCL22CRC	SCL22CRCB
24"	12 7/8"	25 1/2"	44"	CIX3Z-24CRC	CIX3Z-24CRCB	SCL24CRC	SCL24CRCB
26"	13 1/2"	26 3/16"	44"	CIX3Z-26CRC	CIX3Z-26CRCB	SCL26CRC	SCL26CRCB
28"	17 1/4"	30 7/8"	56"	CIX3Z-28CRC	CIX3Z-28CRCB	SCL28CRC	SCL28CRCB
30"	17 7/8"	31 9/16"	56"	CIX3Z-30CRC	CIX3Z-30CRCB	SCL30CRC	SCL30CRCB
32"	17 1/4"	31 1/4"	60"	CIX3Z-32CRC	CIX3Z-32CRCB	SCL32CRC	SCL32CRCB
34"	17 7/8"	31 7/8"	60"	CIX3Z-34CRC	CIX3Z-34CRCB	SCL34CRC	SCL34CRCB
36"	18 1/2"	32 1/2"	60"	CIX3Z-36CRC	CIX3Z-36CRCB	SCL36CRC	SCL36CRCB

Materials available: 304, 316.
Flow resistance: K = 0.5

Termination

Mitter Cut

Used for horizontal exhaust termination with inline fan. Standard with bird screen. Included with CIX3Z and SCL: one (1) Bird Screen



Ø	C - EFFECTIVE LENGTH	ZERO CLEARANCE 3" INSULATED	SINGLE-WALL
5"	10 5/8"	CIX3Z-5MC	SCL5MC
6"	11 7/16"	CIX3Z-6MC	SCL6MC
7"	12 1/4"	CIX3Z-7MC	SCL7MC
8"	13 1/16"	CIX3Z-8MC	SCL8MC
9"	13 7/8"	CIX3Z-9MC	SCL9MC
10"	14 11/16"	CIX3Z-10MC	SCL10MC
11"	15 1/2"	CIX3Z-11MC	SCL11MC
12"	16 5/16"	CIX3Z-12MC	SCL12MC
13"	17 1/8"	CIX3Z-13MC	SCL13MC
14"	17 15/16"	CIX3Z-14MC	SCL14MC
16"	19 9/16"	CIX3Z-16MC	SCL16MC
18"	21 7/32"	CIX3Z-18MC	SCL18MC
20"	22 7/8"	CIX3Z-20MC	SCL20MC
22"	24 17/32"	CIX3Z-22MC	SCL22MC
24"	26 3/16"	CIX3Z-24MC	SCL24MC
26"	27 27/32"	CIX3Z-26MC	SCL26MC
28"	29 1/2"	CIX3Z-28MC	SCL28MC
30"	31 5/32"	CIX3Z-30MC	SCL30MC
32"	32 13/16"	CIX3Z-32MC	SCL32MC
34"	34 15/32"	CIX3Z-34MC	SCL34MC
36"	36 1/8"	CIX3Z-36MC	SCL36MC

Materials available: 304, 316.
Flow resistance: K = 1.25

Warranty

This Security Chimneys Limited Lifetime Warranty warrants your Factory-Built Grease Duct (Product) in a grease duct application to be free from defects in material and workmanship at the time of manufacture when properly connected to and included as a part of a code compliant commercial kitchen ventilation system for cooking appliances. This Limited Lifetime Warranty includes all components and fittings. After installation, if covered components manufactured by Security Chimneys are found to be defective in materials or workmanship during the Limited Lifetime Warranty period and while the Product remains at the site of the original installation, Security Chimneys will, replace the covered components. Security Chimneys reserves the right to replace covered components with an equivalent product and the replacement must be carried out in accordance with Security Chimneys recommendations. If replacement is not commercially practical, Security Chimneys will, at its option, refund the purchase price or wholesale price of the Security Chimneys Product, whichever is applicable. Labor or freight costs to remove or replace Security Chimneys components is not included. THERE ARE EXCLUSIONS AND LIMITATIONS to the Limited Lifetime Warranty as described herein.

COVERAGE COMMENCEMENT DATE

Warranty coverage begins on the date of shipment from Security Chimneys.

EXCLUSIONS AND LIMITATIONS

This Limited Lifetime Warranty applies only if the Product is installed in the United States or Canada and only if used for the application for which it was designed and intended. The Product must be installed and maintained in accordance with the design, installation and maintenance instructions for the Product and in compliance with all applicable installation and building codes and high quality, industry accepted trade practices.

This warranty is non-transferable and extends to the original owner only. The Product must be purchased through a Security Chimneys Agent/ Representative and proof of purchase must be provided.

Components and fittings (excludes labor) –

Year 1-10 – Replacement of all components and fittings.

Year 11-15 – Replacement at 75% off of the prevailing list price in effect at the time of replacement (25% of the retail list price paid by the consumer).

Year 16 + – Replacement at 50% off of the prevailing list price in effect at the time of replacement (50% of the retail list price paid by the consumer).

Security Chimneys will not be responsible for: (a) damages caused by normal wear and tear, corrosion from salt air, accident, riot, fire, flood, high wind or acts of God; (b) damages caused by abuse, negligence, misuse, or unauthorized alteration or repair of the Product affecting its stability or performance. (c) damage resulting from failure to reasonably clean, care for or maintain products in accordance with the printed design, installation and maintenance instructions for the Product; (d) damages caused by failing to provide proper maintenance and service in accordance with the design, installation and maintenance instructions for the Product, including damage to the finish of the Product caused by the use of improper solvents/chemicals or improper cleaning methods; (e) damages, repairs or inefficiency resulting from faulty installation or application of the Product; (e) replacement of system sealants as a result of improper installation or a system grease fire.

This Limited Lifetime Warranty covers only parts as provided herein. Security Chimneys's entire liability is limited to the purchase price of this Product. In no case shall Security Chimneys be responsible for materials, components or construction which are not manufactured or supplied by Security Chimneys or for the labor necessary to install, repair or remove such materials, components or construction. All replacement or repair components will be shipped F.O.B. from the Security Chimneys manufacturing facility.

LIMITATION ON LIABILITY

It is expressly agreed and understood that the sole obligation of Security Chimneys and the purchaser's exclusive remedy under this warranty, under any other warranty, expressed or implied, or in contract, tort or otherwise, shall be limited to replacement, repair, or refund, as specified herein.

In no event shall Security Chimneys be liable for any incidental or consequential damages caused by defects in the Product, whether such damage occurs or is discovered before or after replacement or repair, and whether such damage is caused by Security Chimneys negligence.

Security Chimneys makes no expressed warranties except as stated in this Limited Lifetime Warranty. The duration of any implied warranty is limited to the duration of this expressed warranty.

No one is authorized to change this Limited Lifetime Warranty or to create for Security Chimneys any other obligation or liability in connection with the Product. Some states and provinces do not allow the exclusion or limitation of incidental or consequential damages, so the above limitations or exclusions may not apply to you. The provisions of this Limited Lifetime Warranty are in addition to and not a modification of or subtraction from any statutory warranties and other rights and remedies provided by law.

INVESTIGATION OF CLAIMS AGAINST WARRANTY

Security Chimneys reserves the right to investigate any and all claims against this Limited Lifetime Warranty and to decide, in its sole discretion, upon the method of settlement.

Security Chimneys shall in no event be responsible for any warranty work done by a contractor that is not approved without first obtaining Security Chimneys's prior written consent.

HOW TO REGISTER A CLAIM AGAINST WARRANTY

In order for any claim under this warranty to be valid, you must contact the Security Chimneys Agent/Representative from which you purchased the Product. If you cannot contact the Agent/Representative, then you must notify Security Chimneys in writing. Security Chimneys must be notified of the claimed defect in writing within 90 days of the date of failure. Notices should be directed to the Security Chimneys Warranty Department.

www.securitychimneys.com

Security Chimneys

2125 Monterey, Laval, Quebec
Canada, H7L 3T6

450-973-9999
800-361-4909 (US)
800-667-3387 (Canada)
450-973-2222 (Fax)

Need product information or technical support? Our customer service specialists are ready to answer your questions:

800-667-3387 or contact
infoeng@securitychimneys.com



Information published in all Security Chimneys literature is current at time of publication and is subject to change without notice.

GD
LS481_Catalog_Grease Duct_06-22-18_V3
www.securitychimneys.com **800-361-4909 (US)** **800-667-3387 (Canada)**
Security Chimneys © 2015, 2017